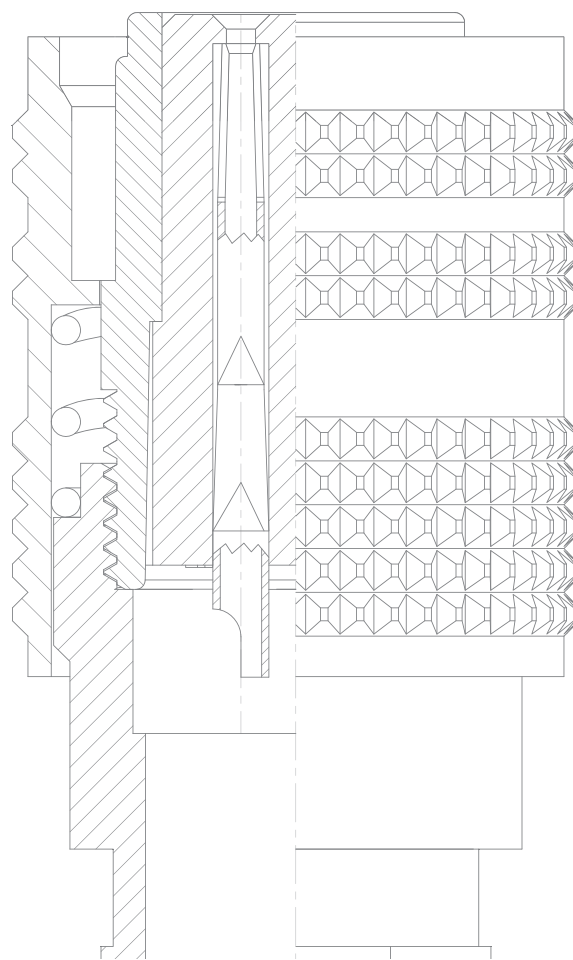


# 2015 CIRCULAR APEX CONNECTORS



100% Made In Taiwan



Apex connector

鋁鋼精密科技  
APEX PRECISION TECHNOLOGY  
Since 1978

# APEX Enterprise and Nature Coexistence

Coexistence of human and nature is the highest enterprise principle to APEX.  
All APEX's staff and operation must be based on the premise of preserving natural environment and protecting the earth.

- Manufacturing the low-pollution products
- Manufacturing without polluting the environment
- Recycle and reuse
- Contribution to protecting the earth
- Development of environmental protection

1.The product information in this catalog is for reference only.

Please request the engineering drawing for the most current and accurate design information.

2.In order to make improvements in the products,we reserve the right to make changes, updates and corrections to the information provided in this catalog at any time.

Subject to change without notice. Thank you for your understanding.



## APEX 企業與自然共存

APEX 應該視(人類和地球自然環境共存)為企業最高指導的原則，  
所有的APEX職員和企業的全部運作，都要以維護自然環境、保護地球為前提。

- 製造低污染的產品
- 製造處理不汙染環境
- 所有的廢棄物回收再利用
- 為保護地球環境，貢獻一份心力
- 持續環境保護發展的工作

1.本目錄記載數據僅供參考，詳細內容請參考式樣書或圖面。

2.本目錄記載內容為了改進產品如有變更，恕不另行通知敬請見諒。

## APEX企業は自然と共存します

APEXはずっとく人類と地球の共存する環境を企業最高指導の原則とし、  
全てのAPEX社員及び企業の活動は全て地球環境の保護、維持を前提としております。

- 汚染の少ない製品作り
- 製造プロセスでは環境汚染を下げる
- すべての廃棄物は回収または再利用する
- 地球環境保護のため、気力を持って貢献する
- 環盡保護発展の仕事を持続する

1.本カタログ記載の数値につきましては、参考数値です。詳しい内容につきましては、仕様書、図面を参考して下さい。

2.本カタログ記載内容は、製品向上のため予告なく変更する事がありますのでご了承下さい。

1-1



2-1

Overview / 產品圖		Series / 系列名稱	Page/頁數
		<b>U-C5</b> PLT-16❖-P-R PLT-16❖-R-R PLT-16❖-LP-R <b>Series (INPUT TYPE)</b>  <b>Stainless Steel</b> 不鏽鋼材質 <b>PAT</b>	2-9
		<b>PLT-16❖-PM-R</b> <b>PLT-16❖-RF-R</b> <b>Series</b> ( OUTPUT TYPE )	2-10
		<b>PLT-16❖A-PM-R</b> <b>PLT-16❖A-RF-R</b> <b>Series</b> ( OUTPUT TYPE )	2-11
		<b>PLT-17❖Series</b> ( INPUT TYPE ) <b>Engineering Plastic</b> 工程塑膠	2-12
		<b>PLT-18❖Series</b> ( OUTPUT TYPE )	2-13
		<b>IP67</b> <b>PLT-18❖Series</b> ( INPUT TYPE ) ( OUTPUT TYPE )	2-13
		<b>PLT-19❖Series</b> ( INPUT TYPE )	2-14
		<b>PLT-25❖Series</b> ( INPUT TYPE )	2-15

(Patent of invention , all rights reserved 專利產品、仿冒必究)

## Contents

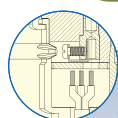
## CONTENTS

Overview / 產品圖	Series / 系列名稱	Page/頁數
	<b>PLT-25♦Series</b> ( OUTPUT TYPE ) <b>PLT-254E-RF-R</b>	2-16

	<b>PAT</b> <b>PLT-25A♦Series</b> ( INPUT TYPE ) Engineering Plastic 工程塑膠 <b>IP 65</b>	2-17
---	--	------

	<b>PLT-30♦Series</b> ( INPUT TYPE )	2-18
---	--	------

	<b>PAT</b> <b>PLT-30♦Series</b> ( OUTPUT TYPE ) <b>PLT-304E-RF-R</b> <b>PLT-307E-RF-R</b>	2-19
---	---	------



	<b>PAT</b> <b>PLT-30♦-PN</b> <b>PLT-30♦-RN</b> ( INPUT TYPE ) 螺絲鎖附型 Screw-Lockup-Contact Model	2-20
---	---	------

	<b>PLT3106A / PLT3102A ♦Series</b> ( INPUT TYPE ) <b>IP 67</b>	2-21
---	--	------

	<b>PLT3106A / PLT3102A ♦Series</b> ( INPUT TYPE ) <b>IP 67</b>	2-22
---	--	------

Overview / 產品圖	Series / 系列名稱	Page/頁數
	<b>PLT3106A / PLT3102A ♦Series</b> ( INPUT TYPE ) <b>IP 67</b>	2-23

	<b>PLT-32♦Series</b> ( INPUT TYPE )	2-24
--	--	------

	<b>PLT-40♦Series</b> ( INPUT TYPE )	2-25
--	--	------

	<b>PLT-40♦Series</b> ( OUTPUT TYPE )	2-26
--	---	------

	<b>PLT-50♦Series</b> ( INPUT TYPE )	2-27
--	--	------

## PLK Series Circular Connectors / 圓型連接器 3-1

Overview / 產品圖	Series / 系列名稱	Page/頁數
	<b>PLK-16♦-RA/PA Series</b> ( INPUT TYPE )	3-3

	<b>PLK-16♦Series</b> ( INPUT TYPE )	3-4
--	--	-----



Overview / 產品圖	Series / 系列名稱	Page/頁數
	<b>PLK-30♦Series</b> ( OUTPUT TYPE )	3-5


**PLS Series Square Connectors / 方型連接器 4-1**

Overview / 產品圖	Series / 系列名稱	Page/頁數
	<b>PLS-20♦Series</b> ( INPUT TYPE )	4-3

	<b>PLS-20♦Series</b> ( OUTPUT TYPE ) <b>PLS-203E-RF-R</b> <b>PLS-207E-RF-R</b>	4-4
--	---	-----

	<b>PLS-24♦Series</b> ( INPUT TYPE )	4-5
---	--	-----

	<b>PLS-24♦Series</b> ( OUTPUT TYPE )	4-6
---	---	-----

	<b>PLS-27♦Series</b> ( OUTPUT TYPE )	4-7
---	---	-----

	<b>PLS-28♦Series</b> ( INPUT TYPE )	4-8
---	--	-----

Overview / 產品圖	Series / 系列名稱	Page/頁數
	<b>PLS-28♦Series</b> ( OUTPUT TYPE ) <b>PLS-2812E-RF-R</b>	4-9

	<b>PLS-28♦Series</b> ( INPUT TYPE ) • <b>Stainless Steel</b> 不鏽鋼材質	4-10
--	---	------

	<b>PLS-35♦Series</b> ( INPUT TYPE )	4-11
--	--	------

	<b>PLS-35♦Series</b> ( OUTPUT TYPE )	4-12
---	---	------

	<b>PLS-41♦Series</b> ( INPUT TYPE ) ( OUTPUT TYPE )	4-13
--	---	------

	<b>PLS-42♦Series</b> ( INPUT TYPE ) ( OUTPUT TYPE )	4-14
--	---	------

**Complex Series / 綜合型號 5-1**

Overview / 產品圖	Series / 系列名稱	Page/頁數
	<b>PLP-♦Series</b> ( INPUT TYPE ) ( OUTPUT TYPE )	5-2

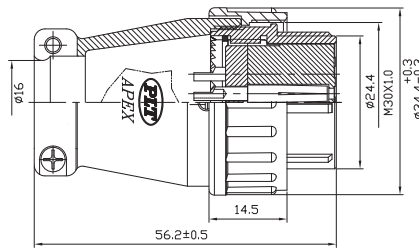
	<b>PLP-141P ♦ Series</b>	5-3
--	--------------------------	-----

## Contents

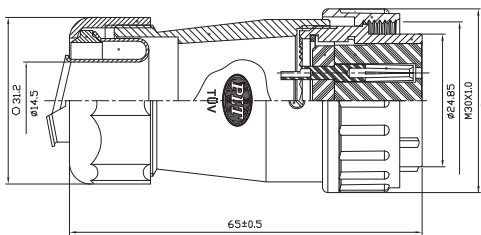
Overview / 產品圖	Series / 系列名稱	Page/頁數
	PLP-154P Series	5-4
	WPM-94 Series	5-5
	WPM-20 Series IP 65	5-6
	WPM-20 Series IP 65	5-7
	WPM-21 Series PAT	5-8
	WPM-30 Series IP 65	5-9
	WPS-23 Series PAT	5-10
	M-6029 Series RF PM	5-11

Overview / 產品圖	Series / 系列名稱	Page/頁數
	PLTS-40 Series PAT	5-12
	PLT-16-RCaC-R	2-9
	PLT-19-RCa-R PLT-25C-RCa-R PLT-30C-RCa-R	2-14 2-15,2-16 2-18,2-19 2-20,3-5
	PLT-25A-RCa-R PLT-30A-RCa-R PAT	2-15,2-16 2-18,2-19 2-20,3-5
	PLT-32-RCa-R PLT-40-RCa-R PLT-50-RCa-R	2-24 2-25,2-26 2-27
	PLK-16-RCa-R	3-4
	PLS-20-RCa-R PLS-24-RCa-R PLS-28-RCa-R	4-3,4-4 4-5,4-6 4-8,4-9
	AMS25043-24A	4-11,4-12

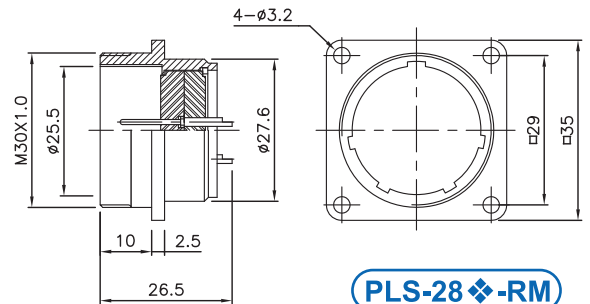
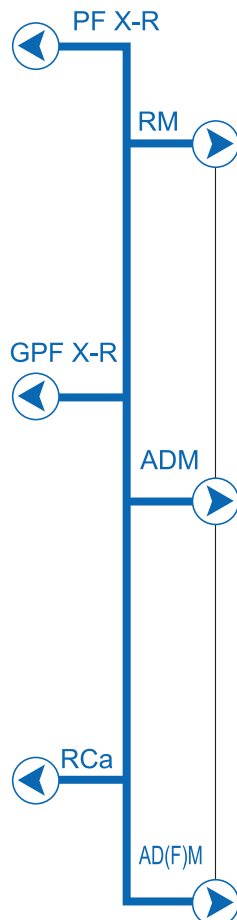
(Patent of invention , all rights reserved 專利產品、仿冒必究)



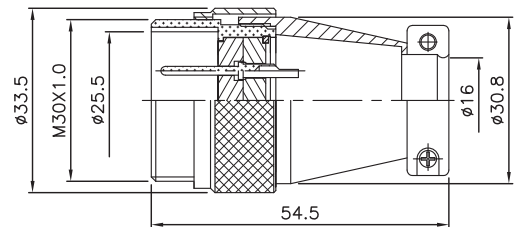
PLS-28◆-PF X-R



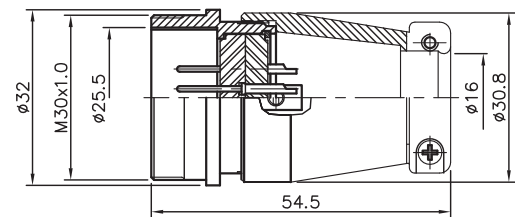
PLS-28◆-GPF1/2" X-R



PLS-28◆-RM



PLS-28◆-ADM

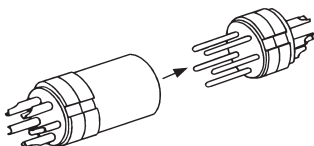


Connection  
結合

● In addition, when the direction of arrows are identical, the assembly may not be proceeded  
此外，當箭頭的方向相同時，則可能無法組合

Please select an appropriate contact at the column below  
請從下列的欄位中選擇一個適當的接點

Nomenclature 表示方法  
PLS-28◆-GPF1/2"



Connect to the contact,  
the male pin, of insulation  
連接到絕緣的公導針

(TÜV Approved)

UL : (UL Approved)(UL認證)

◆ No. of contacts 接點數目	12	16	17	20	26		
Contacts Configuration 接點方位							
Rated current / voltage 額定電流 / 電壓	10A 250V	5A 250V	5A 250V	5A 250V	5A 250V		
Operation limit voltage (AC.V.rms) 操作電壓限制	250	250	250	250	250		
Withstanding voltage (AC.V.rms) 1 minute 耐電壓1分鐘	1000	1000	1000	1000	1000		
Insulation resistance (MΩ MIN.) at DC 500V 絕緣阻抗	1000	1000	1000	1000	1000		
Contact resistance (mΩ MAX.) at DC 1A 接觸阻抗	5	5	5	3	3		
Solder inter diameter 焊孔內徑	1.6	1.6	1.6	1.2	1.2		



## PLT Series 圓型連接器

PLT SERIES 2



PLT-8 Series



PLT-9 Series



PLT-11 Series



PLT-14 Series



PLT-15 Series



INPUT TYPE  
PLT-16 Series



OUTPUT TYPE  
PLT-16A Series



Engineering Plastic 工程塑膠  
PLT-17 Series



PLT-18 Series



PLT-19 Series



PLT-25 Series



PAT  
PLT-25A Series



PLT-30 Series



Screw-Lockup-Contact Model  
螺絲鎖附型  
PAT  
PLT-303 Series



PLT-31 Series



PLT-32 Series



PLT-40 Series



PLT-50 Series





● ORDERING INFORMATION



P	Plug	插 頭	AD	Adapter	中 繼
R	Receptacle	插 座	Ca	Cap	保護蓋
F	Female	導 梢	RT	Rubber tube	橡膠管
M	Male	導 針	G	Conduit type	軟管式

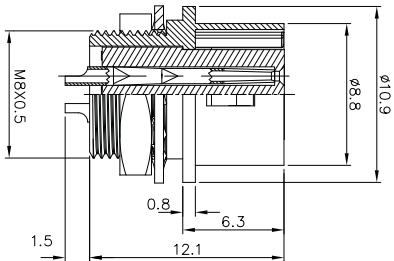
● MATERIAL & FINISH

Kindly instruct material & finish by below types when ordering

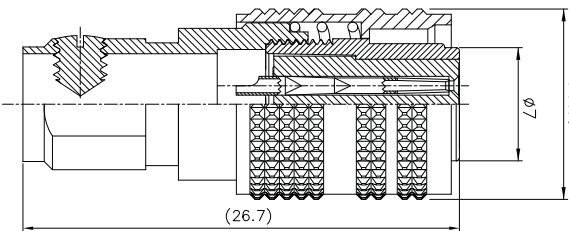
Description	Material	Finish
Shell/外殼、本體	<ul style="list-style-type: none"><li>▪ Stainless Steel/不鏽鋼</li><li>▪ Zinc Die-Casting/鋅合金壓鑄</li><li>▪ Aluminum alloy/鋁合金壓鑄</li></ul>	<ul style="list-style-type: none"><li>▪ Chrome-plated/鉻電鍍</li><li>▪ Gold-plated/金電鍍</li><li>▪ Nickel-plated/鎳電鍍</li><li>▪ Silver-plated/銀電鍍</li></ul>
Insulator/絕緣體	<ul style="list-style-type: none"><li>▪ Bakelite/電木</li><li>▪ Delrin/塑鋼</li><li>▪ Teflon Polyethylene/鐵氟龍</li></ul>	
Contact/接觸體	<ul style="list-style-type: none"><li>▪ Brass/銅</li><li>▪ P.Brass/磷銅</li><li>▪ B.Brass/鈹銅</li></ul>	<ul style="list-style-type: none"><li>▪ Gold-plated/金電鍍</li><li>▪ Nickel-plated/鎳電鍍</li><li>▪ Silver-plated/銀電鍍</li></ul>

Input Type / Output Type

PLT SERIES 2



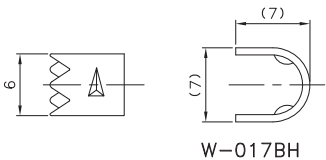
PLT-8-RF-R



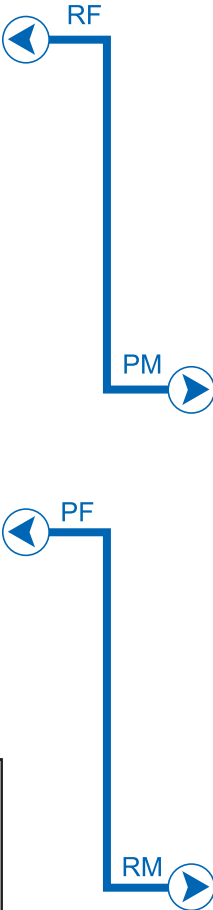
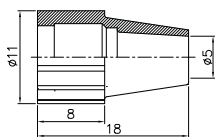
PLT-8-PF-R

ACCESSORY:

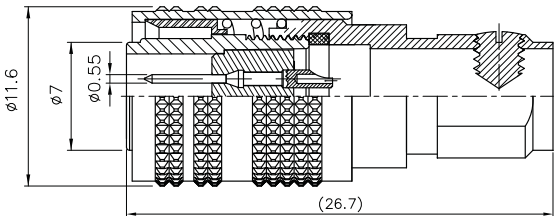
Cable Clamp



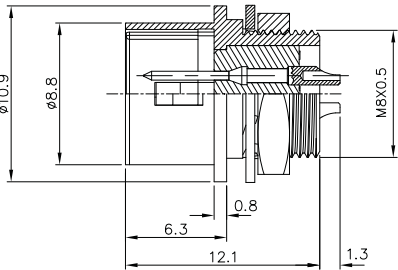
Rubber Pipe



PLT- 8 Series

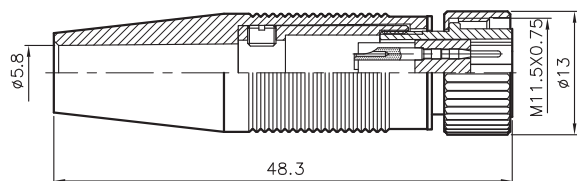


PLT-8-PM-R



PLT-8-RM-R

◆ No. of contacts	4	5	6				
Contacts Configuration							
Rated current / voltage	1A 300V	1A 300V	1A 300V				
Operation limit voltage (AC.V.rms)	125	125	125				
Withstanding voltage (AC.V.rms) 1 minute	300	300	300				
Insulation resistance (MΩ MIN.) at DC 500V	1000	1000	1000				
Contact resistance (mΩ MAX.) at DC 1A	10	10	10				



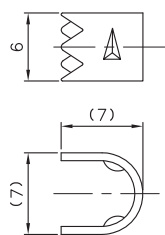
PLT-9-P-R



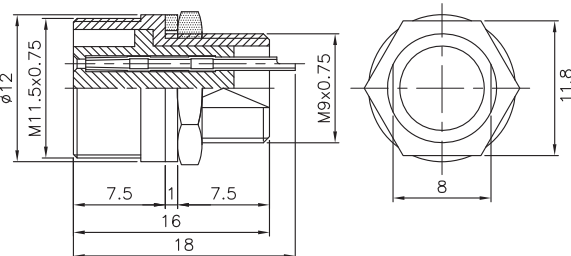
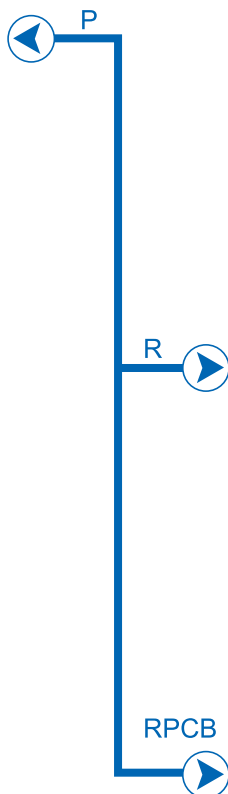
PLT- 9 Series

## Note:

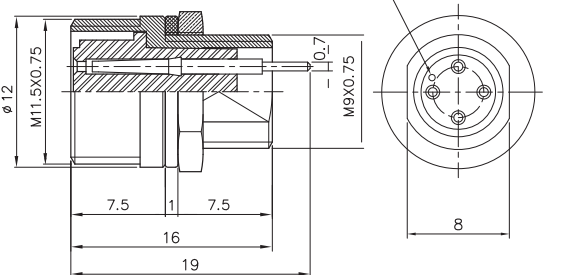
## Cable Clamp



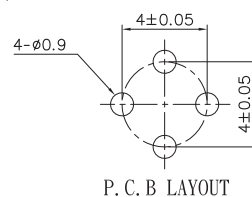
W-017BH



PLT-9-R-R



PLT-9-RPCB

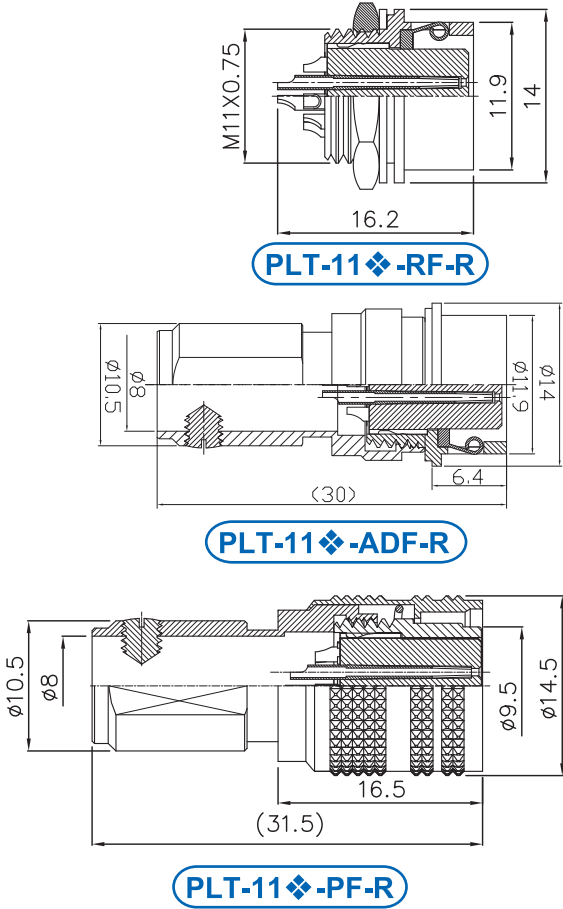


P. C. B. LAYOUT

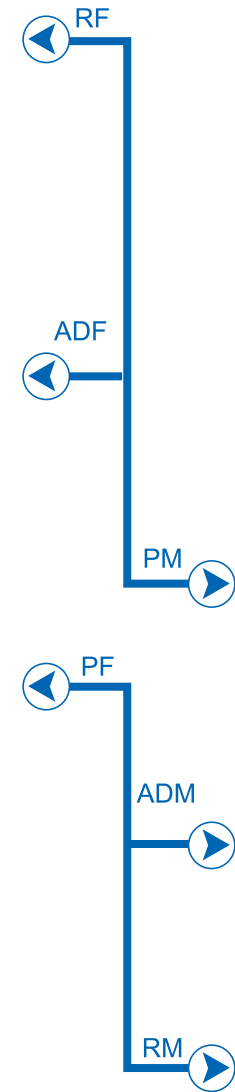
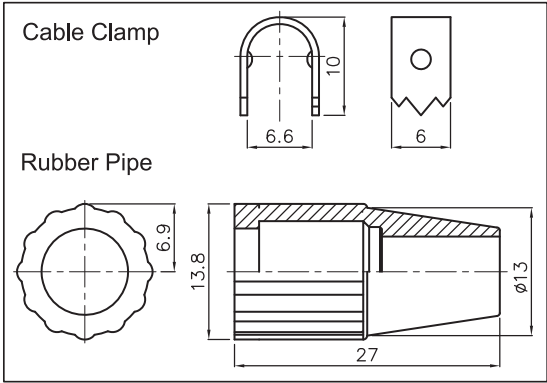
◆ No. of contacts	4	6	7				
Contacts Configuration							
Rated current / voltage	1A 300V	1A 300V	1A 300V				
Operation limit voltage (AC.V.rms)	300	300	300				
Withstanding voltage (AC.V.rms) 1 minute	AC300V	AC300V	AC300V				
Insulation resistance (MΩ MIN.) at DC 500V	200	200	200				
Contact resistance (mΩ MAX.) at DC 1A	10	10	10				
Solder inter diameter	0.7	0.7	0.7				

Input Type / Output Type

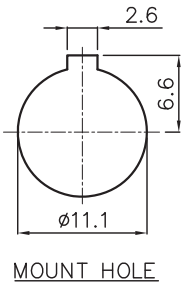
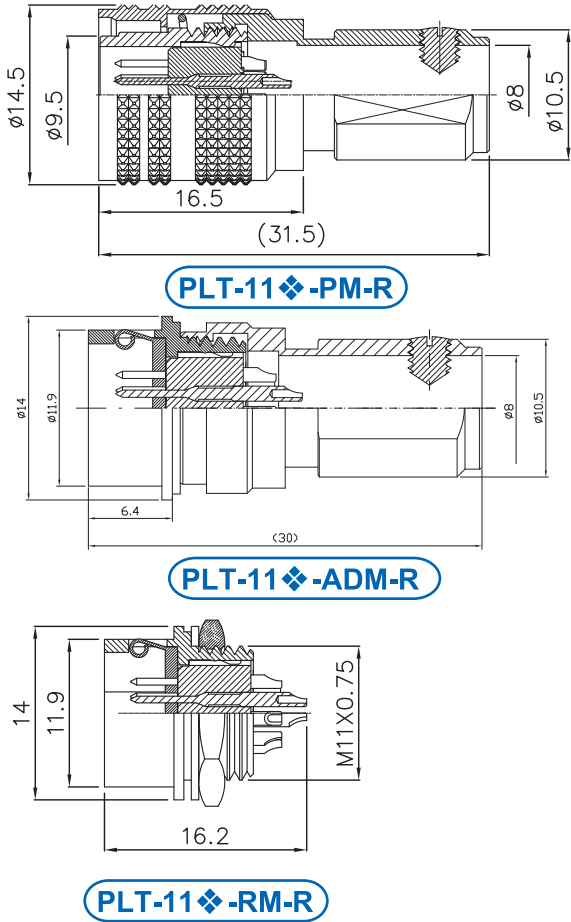
PLT SERIES 2



ACCESSORY:



PLT- 11 Series



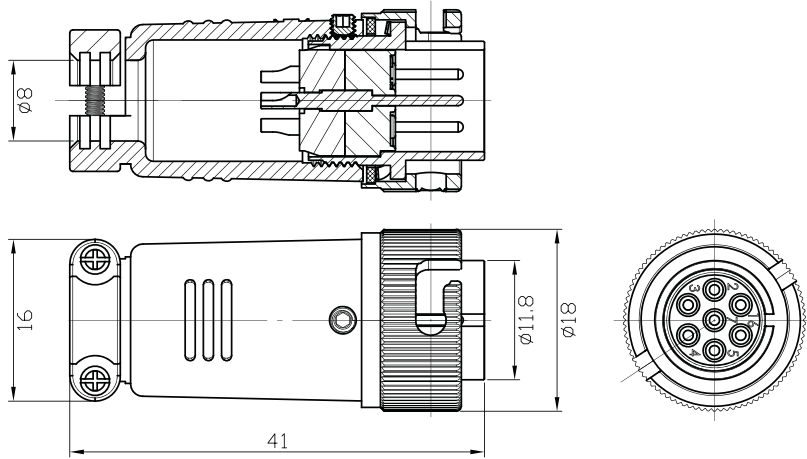
◆ No. of contacts	10	12				
Contacts Configuration						
Rated current / voltage	2A 125V	2A 125V				
Operation limit voltage (AC.V.rms)	125	125				
Withstanding voltage (AC.V.rms) 1 minute	125	125				
Insulation resistance (MΩ MIN.) at DC 500V	200	200				
Contact resistance (mΩ MAX.) at DC 1A	30	30				



14

TÜV

Output Type

2  
PLT SERIES

PLT-14 ◆ -PM-R

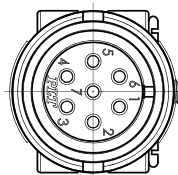
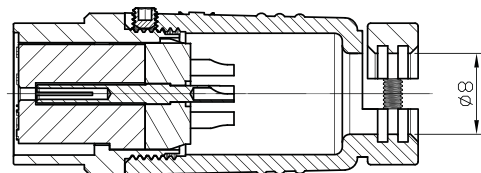


PM

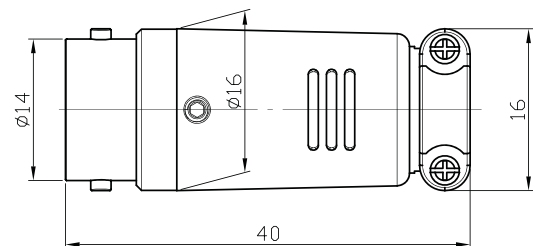


PLT-14 Series

ADF



PLT-14 ◆ -ADF-R

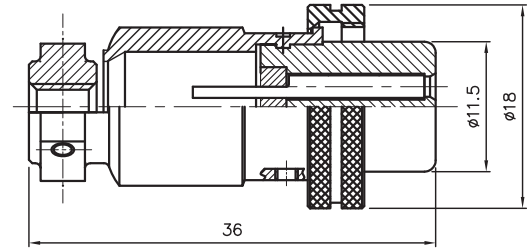


◆ No. of contacts	3	4	7			
Contacts Configuration						
Rated current / voltage	5A 125V	5A 125V	5A 125V			
Operation limit voltage (AC.V.rms)	300	300	300			
Withstanding voltage (AC.V.rms) 1 minute	1000	1000	1000			
Insulation resistance (MΩ MIN.) at DC 500V	1000	1000	1000			
Contact resistance (mΩ MAX.) at DC 1A	4	4	4			

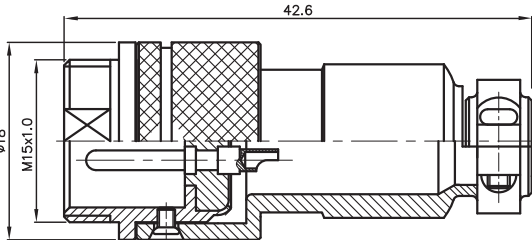
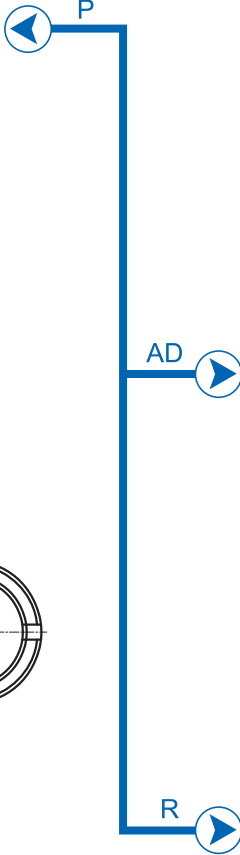
Input Type



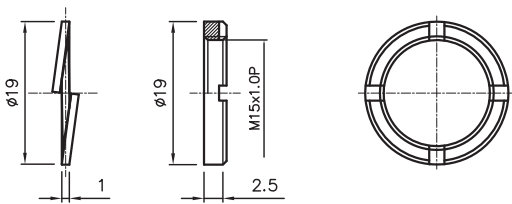
PLT SERIES 2



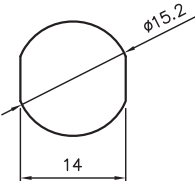
PLT-15-P-R



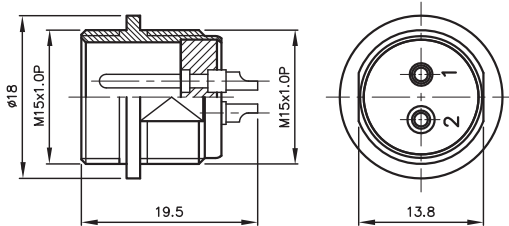
PLT-15-AD-R



ACCESSORIES

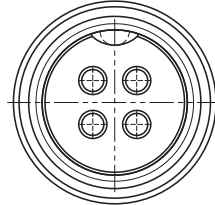
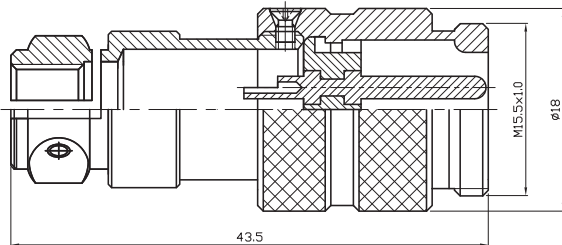


MOUNTING HOLES

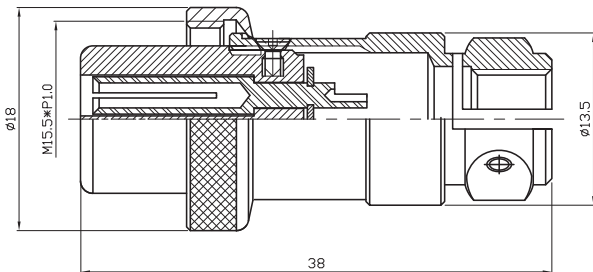
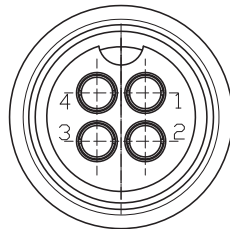


PLT-15-R-R

◆ No. of contacts	2	3	4			
Contacts Configuration						
	TÜV	TÜV	TÜV			
Rated current / voltage	5A 125V	5A 125V	5A 125V			
Operation limit voltage (AC.V.rms)	200	200	200			
Withstanding voltage (AC.V.rms) 1 minute	1000	1000	1000			
Insulation resistance (MΩ MIN.) at DC 500V	100	100	100			
Contact resistance (mΩ MAX.) at DC 1A	10	10	10			
Solder inter diameter	1.8 / 2.3	1.8 / 2.3	1.5			



PLT-15.5-4AD-R



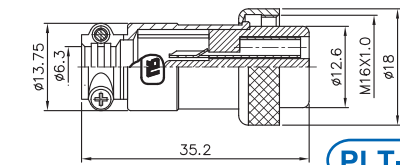
PLT-15.5-4P-R

◆ No. of contacts	4					
Contacts Configuration						
Rated current / voltage	5A 150V					
Operation limit voltage (AC.V <sub>rms</sub> )	200					
Withstanding voltage (AC.V <sub>rms</sub> ) 1 minute	1000					
Insulation resistance (MΩ MIN.) at DC 500V	1000					
Contact resistance (mΩ MAX.) at DC 1A	3					
Solder inter diameter	1					

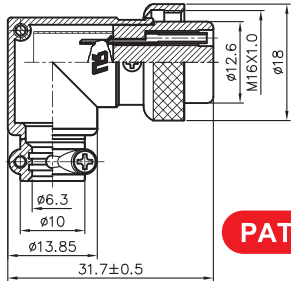
## Input Type

CULUS TÜV

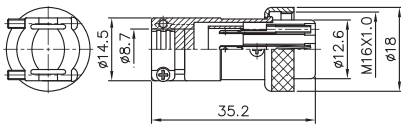
PLT SERIES 2



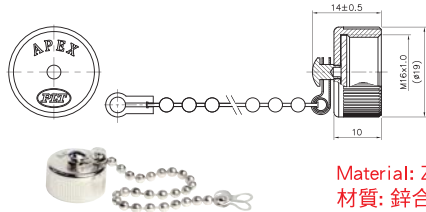
PLT-16-P-R



PAT PLT-16-LP-R



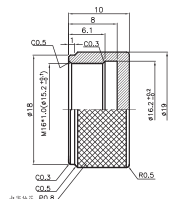
PLT-16-PA-R

Material: Zinc Alloy  
材質: 鋅合金

PLT-16-RCaC-R

Material: Zinc Alloy  
材質: 鋅合金

U-C5

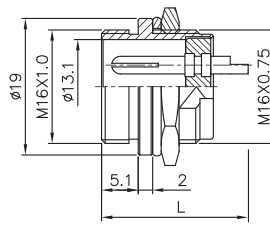
Material: Brass  
材質: 銅Material: Brass  
材質: 銅

PAT Stainless Steel 不銹鋼材質

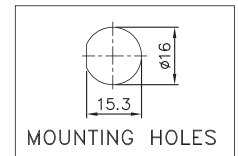
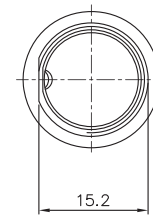


PLT-16 Series

PIN	2	3	4	5	6	7	8
L	20.5	20.5	20.5	20.5	19	19	19

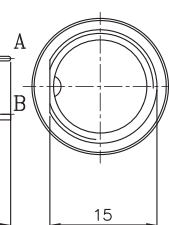
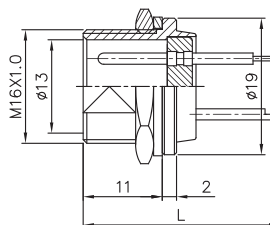


PAT PLT-16-R-R



MOUNTING HOLES

RL

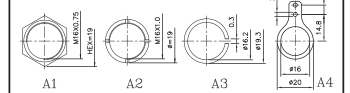
\*A: PCB TYPE  
\*B: SOLDERING TYPE

PAT PLT-16-RL-R

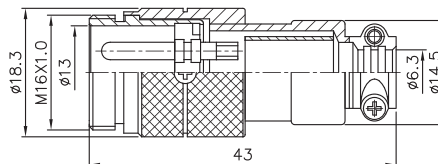
FORM 1 FOR PLT-16\*-RL

LENGTH	L1	L2	L3	L4	L5	L6
SIZE	20.5	23.5	29	30.5	21.5	21.5

\*FORM 2 (ACCESSORIES)



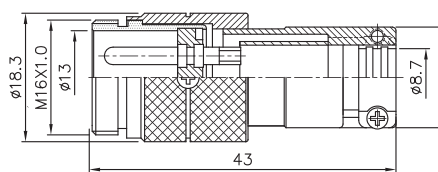
AD



PLT-16-AD-R

PD:98441

C5

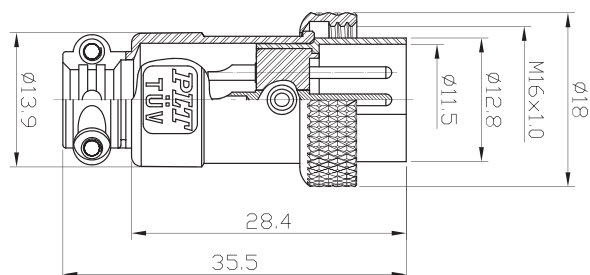


PLT-16-ADA-R

(Patent of invention, all rights reserved 專利產品、仿冒必究)

◆ No. of contacts	2	3	4	5	6	7	8	
Contacts Configuration								
	TÜV	TÜV	TÜV	TÜV	TÜV	TÜV	TÜV	
Rated current / voltage	5A 125V	5A 125V	5A 125V	5A 125V	5A 125V	5A 125V	5A 125V	
Operation limit voltage (AC.V.rms)	200	200	200	200	200	200	200	
Withstanding voltage (AC.V.rms) 1 minute	1000	1000	1000	1000	1000	1000	1000	
Insulation resistance (MΩ MIN.) at DC 500V	1000	1000	1000	1000	1000	1000	1000	
Contact resistance (mΩ MAX.) at DC 1A	3	3	3	3	3	3	3	
Solder inter diameter	1.4	1.4	1.4	1.2	0.8	0.8	0.8	

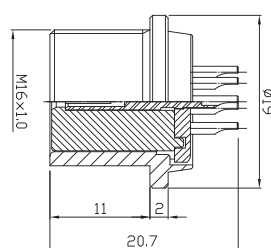




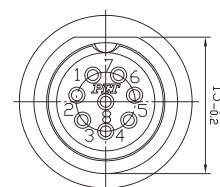
PLT-16-PM-R



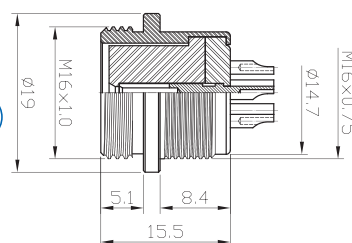
RLF



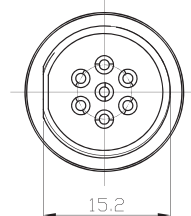
PLT-16-RLF-R



RF



PLT-16-RF-R

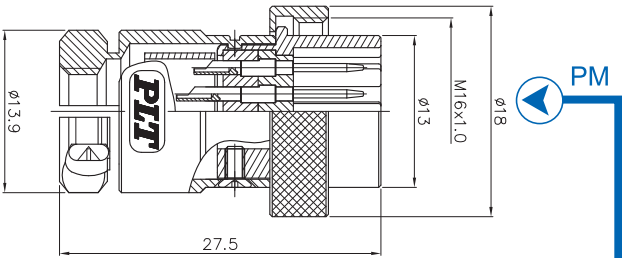


PLT-16 Series

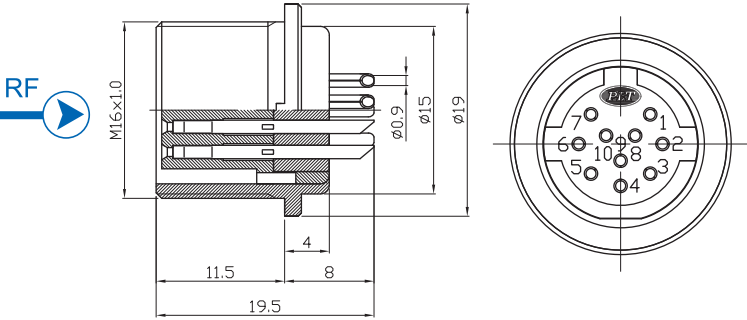
◆ No. of contacts	2	3	4	5	6	7	8	
Contacts Configuration								
Rated current / voltage	5A 125V	5A 125V	5A 125V	5A 125V	5A 125V	5A 125V	5A 125V	
Operation limit voltage (AC.V.rms)	200	200	200	200	200	200	200	
Withstanding voltage (AC.V.rms) 1 minute	1000	1000	1000	1000	1000	1000	1000	
Insulation resistance (MΩ MIN.) at DC 500V	1000	1000	1000	1000	1000	1000	1000	
Contact resistance (mΩ MAX.) at DC 1A	3	3	3	3	3	3	3	
Solder inter diameter	1.4	1.4	1.4	1.2	0.8	0.8	0.8	

Output Type

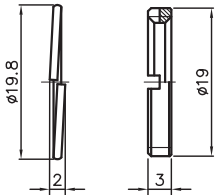
PLT SERIES 2



PLT-16A-PM-R



PLT-16A-RF-R



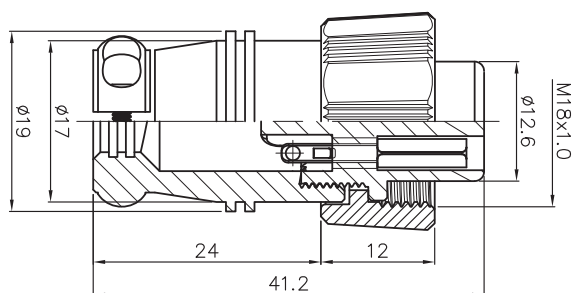
ACCESSORIES

◆ No. of contacts	10							
Contacts Configuration								
Withstanding voltage (AC.V.rms) 1 minute	1000							
Insulation resistance (MΩ MIN.) at DC 500V	100							
Contact resistance (mΩ MAX.) at DC 1A	10							

17

C<sub>UL</sub> US TÜV

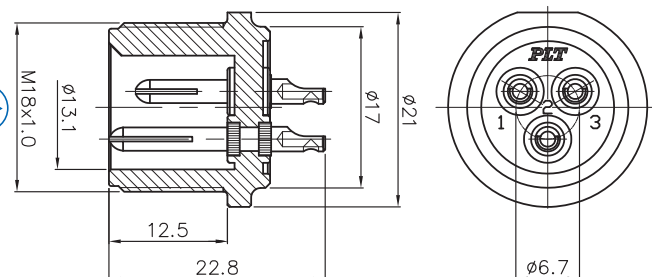
Input Type

2  
PLT SERIES

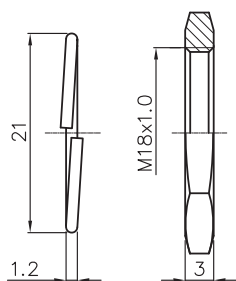
PLT-17-P-R



PLT- 17 Series



PLT-17-R-R



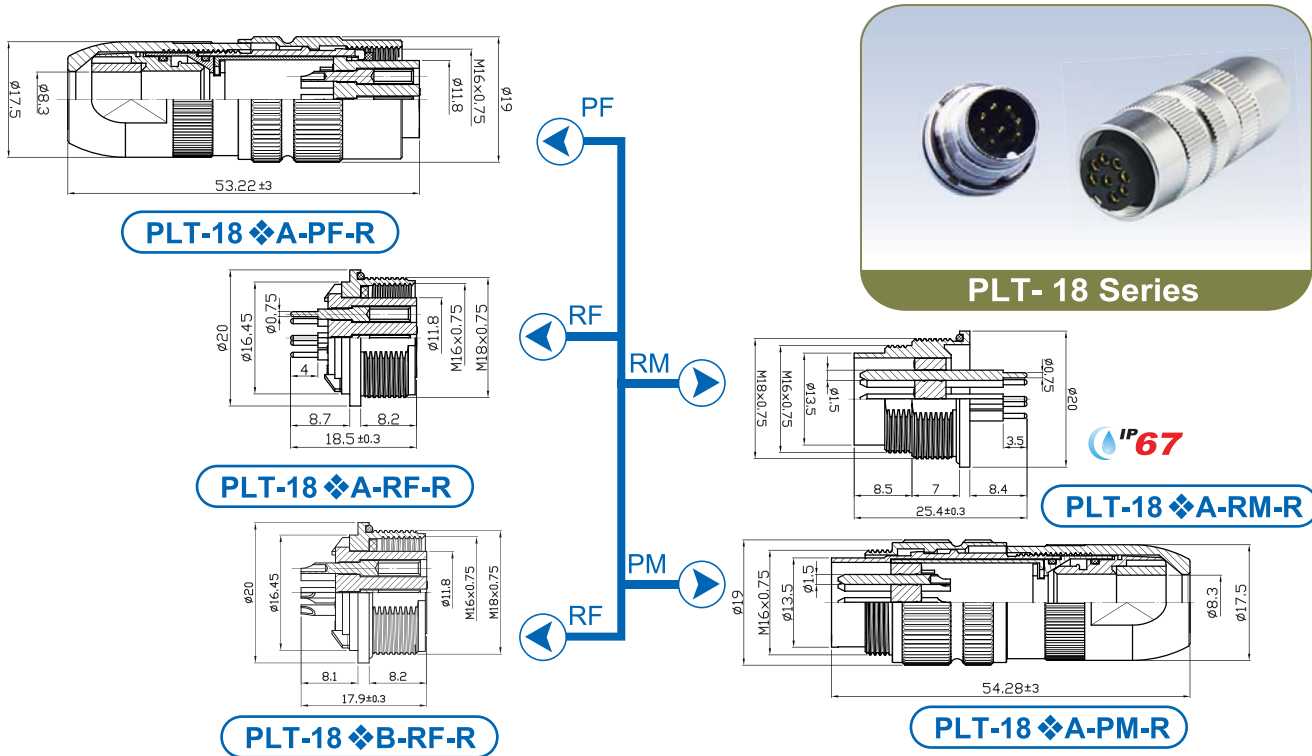
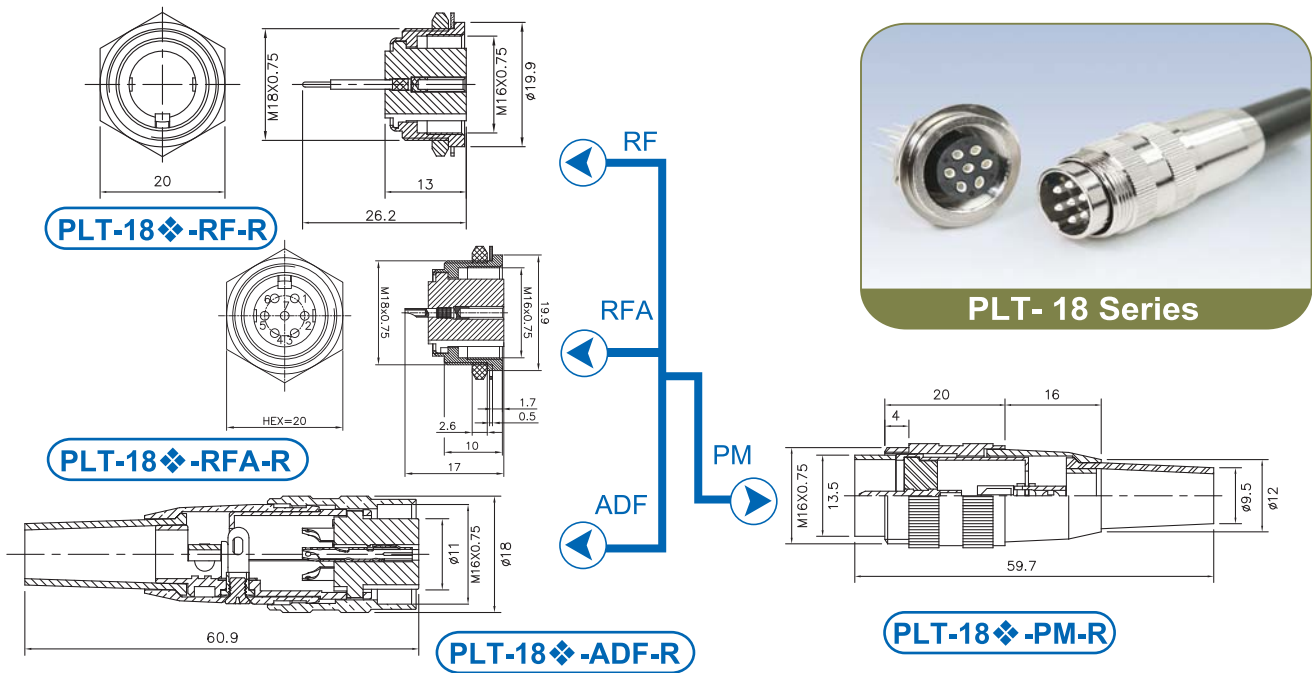
ACCESSORIES

## (Engineering Plastic 工程塑膠)

◆ No. of contacts	2	3	4	5	6	7	8	
Contacts Configuration								
Rated current / voltage	5A 125V	5A 125V	5A 125V	5A 125V	5A 125V	5A 125V	5A 125V	
Operation limit voltage (AC.V.rms)	200	200	200	200	200	200	200	
Withstanding voltage (AC.V.rms) 1 minute	1000	1000	1000	1000	1000	1000	1000	
Insulation resistance (MΩ MIN.) at DC 500V	1000	1000	1000	1000	1000	1000	1000	
Contact resistance (mΩ MAX.) at DC 1A	3	3	3	3	3	3	3	
Solder inter diameter	1.4	1.4	1.4	1.2	0.8	0.8	0.8	

Input Type / Output Type

PLT SERIES 2



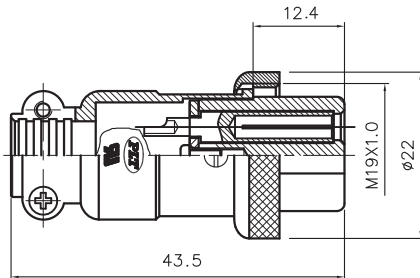
◆ No. of contacts	5	7	8			
Contacts Configuration						
	TÜV	TÜV	TÜV			
Rated current / voltage	5A 125V	5A 125V	5A 125V			
Operation limit voltage (AC.V <sub>rms</sub> )	200	200	200			
Withstanding voltage (AC.V <sub>rms</sub> ) 1 minute	1000	1000	1000			
Insulation resistance (MΩ MIN.) at DC 500V	1000	1000	1000			
Contact resistance (mΩ MAX.) at DC 1A	3	3	3			
Solder inter diameter	1.55	1.55	1.55			



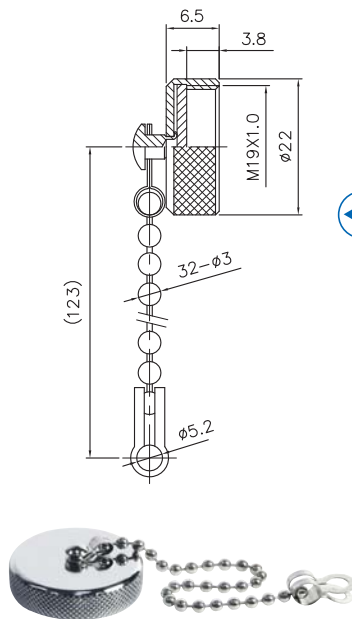
19

TÜV

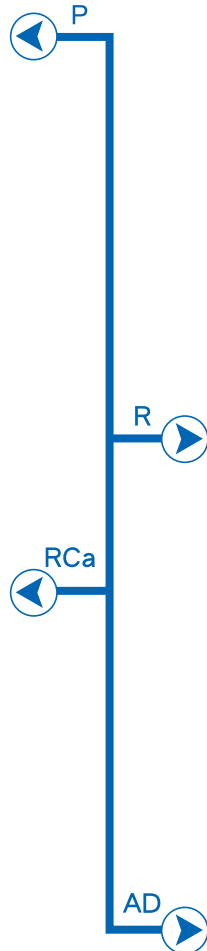
Input Type

2  
PLT SERIES

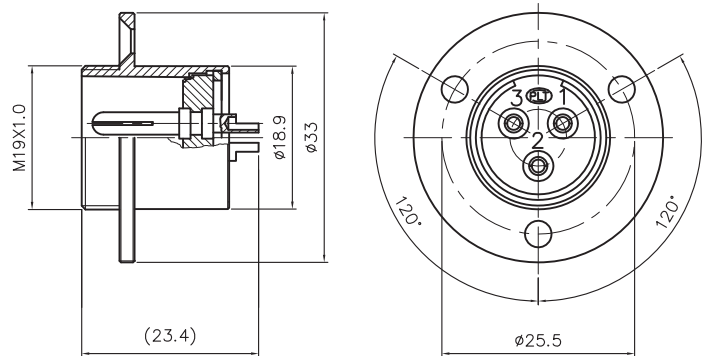
PLT-19-P-R



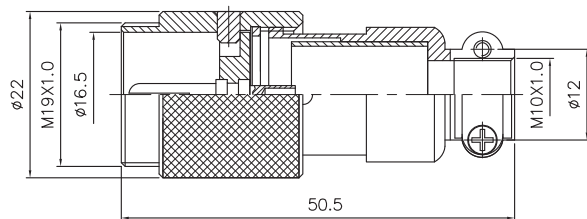
PLT-19-RCa-R



PLT-19 Series



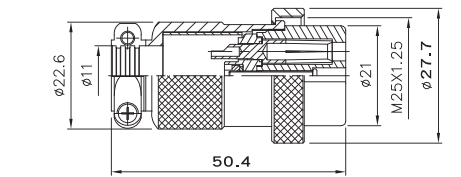
PLT-19-R-R



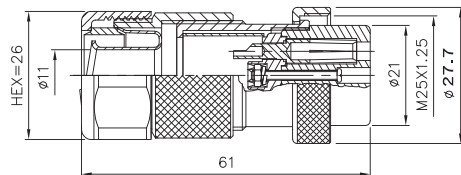
PLT-19-AD-R

◆ No. of contacts	2	3	4			
Contacts Configuration	 TÜV	 TÜV	 TÜV			
Rated current / voltage	7A 250V	7A 250V	7A 250V			
Operation limit voltage (AC.V.rms)	250	250	250			
Withstanding voltage (AC.V.rms) 1 minute	1000	1000	1000			
Insulation resistance (MΩ MIN.) at DC 500V	1000	1000	1000			
Contact resistance (mΩ MAX.) at DC 1A	3	3	3			
Solder inter diameter	1.7	1.7	1.7			

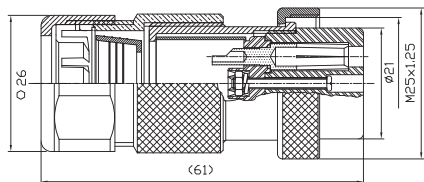
## Input Type



PLT-25-P-R

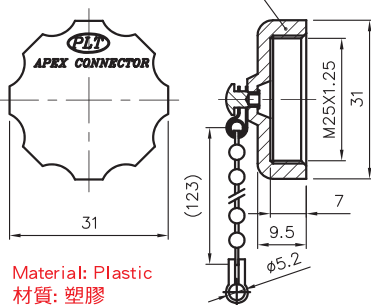
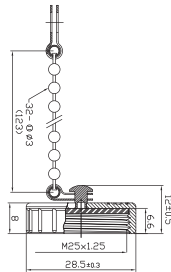


PLT-25-GP3-R 3=轉接3/8"軟管



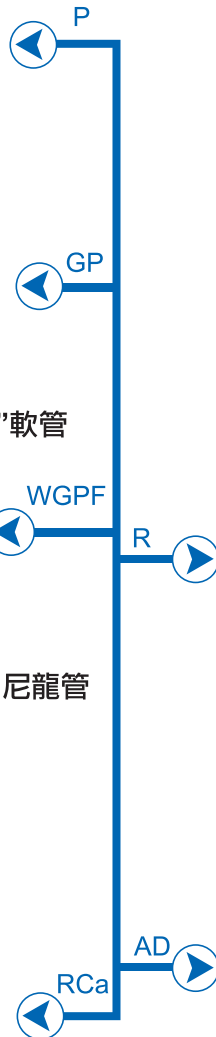
PLT-25-WGPF3-R 3=轉接3/8"尼龍管

MATERIAL: ABS(BLACK)

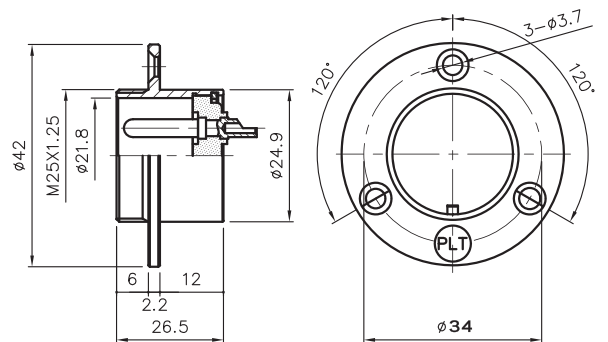
Material: Plastic  
材質: 塑膠Material: Zinc Alloy  
材質: 鋅合金

PLT-25A-RCa-R

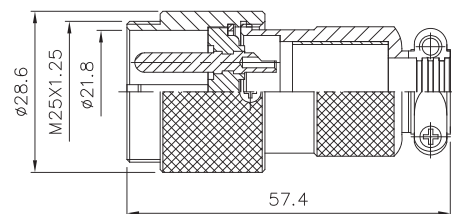
PLT-25C-RCa-R



PLT-25 Series

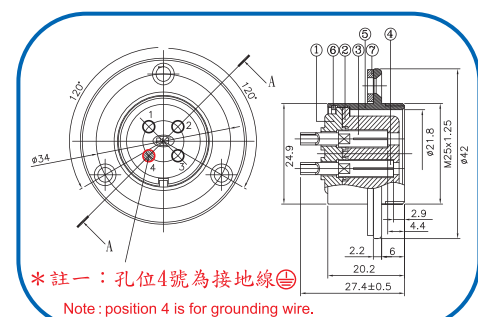
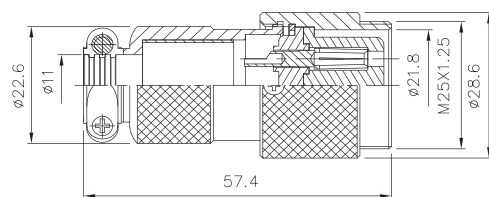
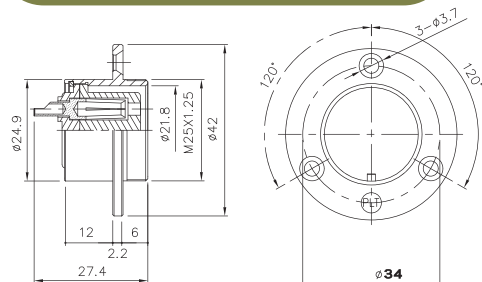


PLT-25-R-R

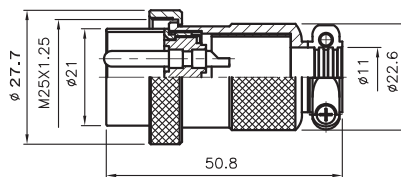


PLT-25-AD-R

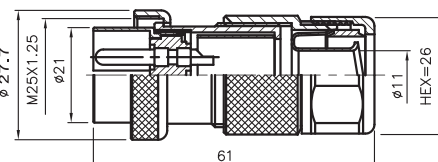
◆ No. of contacts	2	3	4	5	6	
Contacts Configuration	 TÜV	 TÜV	 TÜV	 TÜV	 TÜV	
Rated current / voltage	10A 250V	10A 250V	10A 250V	10A 250V	10A 250V	
Operation limit voltage (AC.V.rms)	400	400	400	400	300	
Withstanding voltage (AC.V.rms) 1 minute	2000	2000	2000	1800	1800	
Insulation resistance (MΩ MIN.) at DC 500V	2000	2000	2000	2000	2000	
Contact resistance (mΩ MAX.) at DC 1A	3	3	3	3	3	
Solder inter diameter	1.9	1.9	1.9	1.9	1.9	



PM

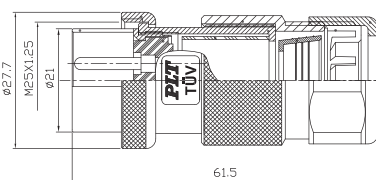


GPM



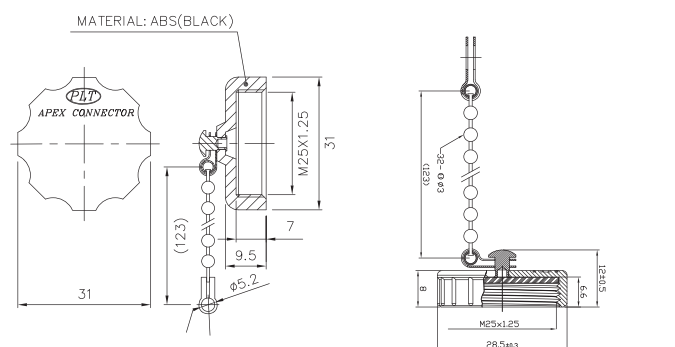
RF

WGPM



ADF

PLT-25-WGPM3-R 3=轉接3/8"尼龍管

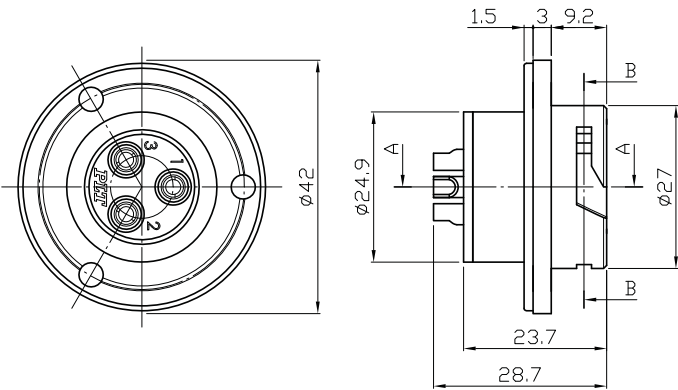


RCa

PLT-25A-RCa-R

PLT-25C-RCa-R

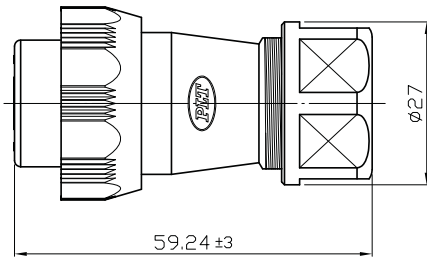
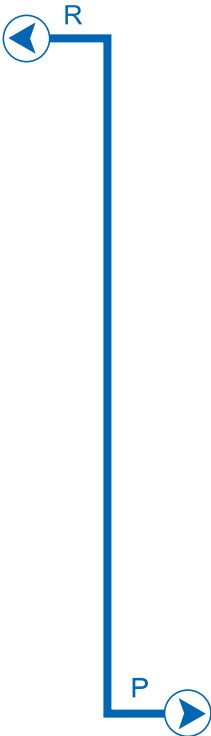
◆ No. of contacts	2	3	4	5	6	
Contacts Configuration						
Rated current / voltage	10A 250V	10A 250V	10A 250V	10A 250V	10A 250V	
Operation limit voltage (AC.V.rms)	400	400	400	400	300	
Withstanding voltage (AC.V.rms) 1 minute	2000	2000	2000	1800	1800	
Insulation resistance (MΩ MIN.) at DC 500V	2000	2000	2000	2000	2000	
Contact resistance (mΩ MAX.) at DC 1A	3	3	3	3	3	
Solder inter diameter	1.9	1.9	1.9	1.9	1.9	



PLT-25◆A-R-R

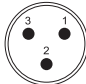
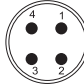


PLT- 25A Series



PLT-25◆A-P-R

(Engineering Plastic 工程塑膠)

◆ No. of contacts	3	4				
Contacts Configuration						
Rated current / voltage	10A 250V	10A 250V				
Operation limit voltage (AC.V.rms)	200	200				
Withstanding voltage (AC.V.rms) 1 minute	1000	1000				
Insulation resistance (MΩ MIN.) at DC 500V	1000	1000				
Contact resistance (mΩ MAX.) at DC 1A	3	3				
Solder inter diameter						

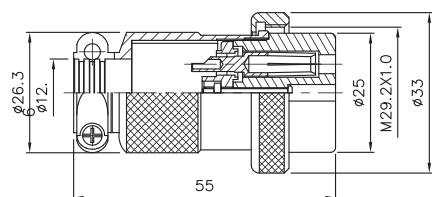
30

cTUV<sup>®</sup> TÜV

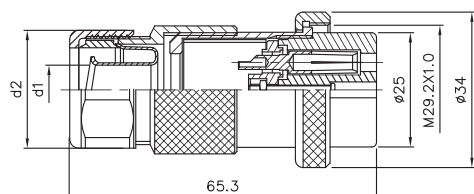
Input Type

2

PLT SERIES

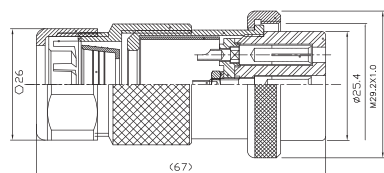


PLT-30-P-R



PLT-30-GP-R

3	3/8" 軟管	d1	d2
4	1/2" 軟管	d1	d2
		ø10.8	ø26.3
		ø14.3	ø31.2

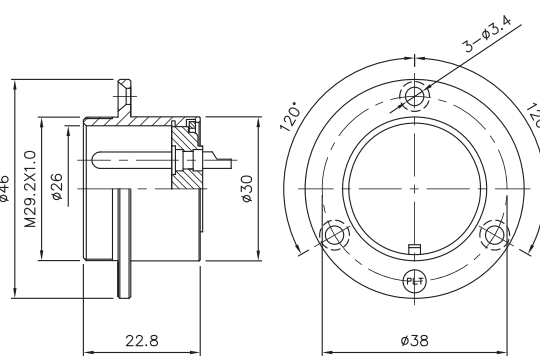


PLT-30-WGP-R

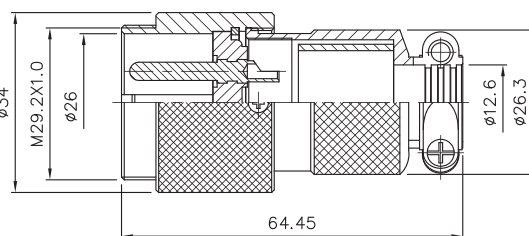
3	3/8" 尼龍管	d1	d2
4	1/2" 尼龍管	d1	d2
		ø10.8	ø26.3
		ø14.3	ø31.2



PLT- 30 Series

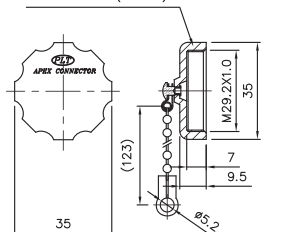
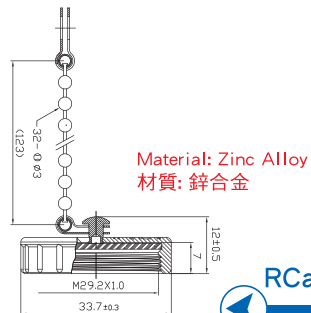


PLT-30-R-R



PLT-30-AD-R

MATERIAL: ABS(BLACK)

Material: Plastic  
材質: 塑膠Material: Zinc Alloy  
材質: 鋅合金

PLT-30A-RCa-R

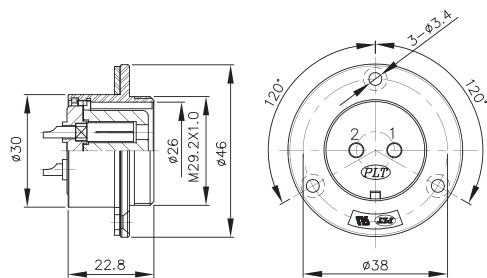


PLT-30C-RCa-R

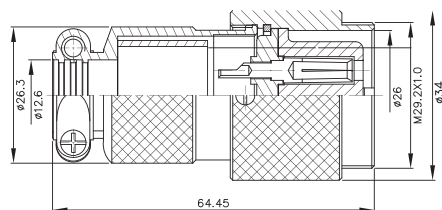
◆ No. of contacts	2	3	4	5	8	
Contacts Configuration						
	TÜV	TÜV	TÜV	TÜV	TÜV	
Rated current / voltage	15A 250V	15A 250V	15A 250V	15A 250V	10A 250V	
Operation limit voltage (AC.V.rms)	400	400	400	400	300	
Withstanding voltage (AC.V.rms) 1 minute	2000	2000	2000	1800	1800	
Insulation resistance (MΩ MIN.) at DC 500V	2000	2000	2000	2000	2000	
Contact resistance (mΩ MAX.) at DC 1A	3	3	3	3	3	
Solder inter diameter	2.8	2.8	2.8	2.8	2.5	



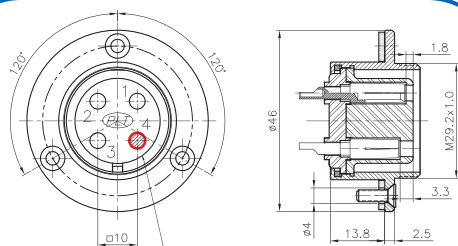
## Output Type

C<sub>AL</sub> US TÜV

PLT-30-RF-R

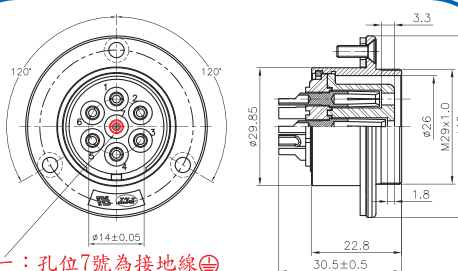


PLT-30-ADF-R



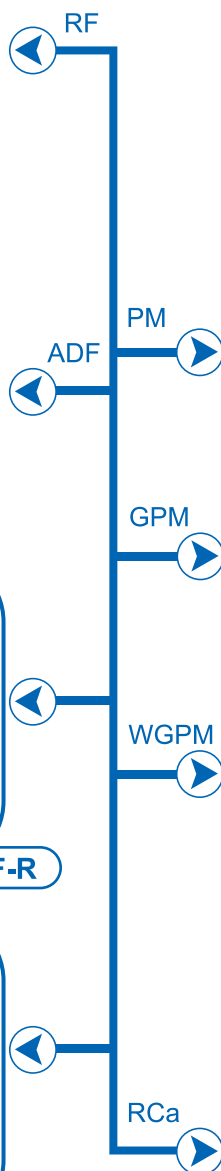
\*註一：孔位4號為接地線  
Note: position 4 is for grounding wire.

PAT PLT-304E-RF-R

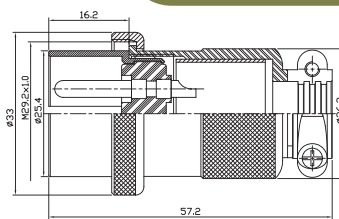


\*註一：孔位7號為接地線  
Note: position 7 is for grounding wire.

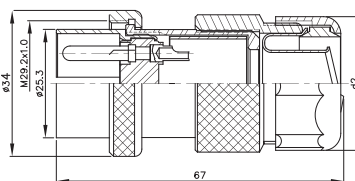
PAT PLT-307E-RF-R



PLT-30 Series

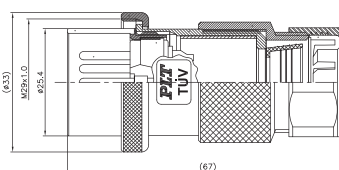


PLT-30-PM



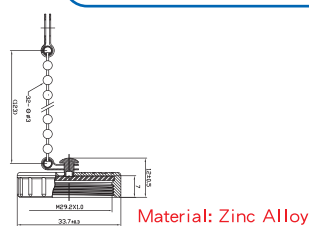
	3	3/8" 軟管	d1	d2
	4	1/2" 軟管	d1	d2
			ø10.8	ø26.3
			ø14.3	ø31.2

PLT-30-GPM



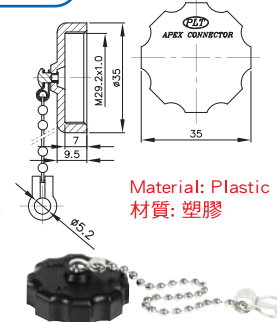
3	3/8" 尼龍管	d1	d2
		ø10.8	ø26.3
4	1/2" 尼龍管	d1	d2
		ø14.3	ø31.2

PLT-30-WGPM-R



Material: Zinc Alloy  
材質：鋅合金

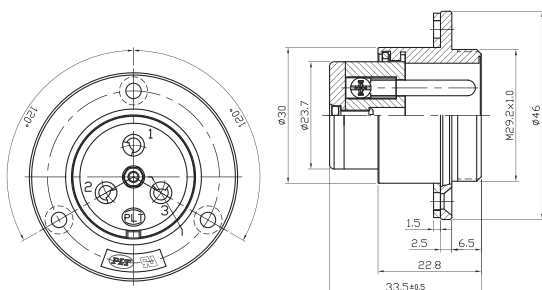
PLT-30C-RCa-R



Material: Plastic  
材質：塑膠

PLT-30A-RCa-R

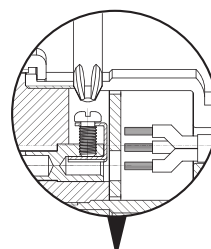
◆ No. of contacts	2	3	4	5	7	8	
Contacts Configuration							
Rated current / voltage	15A 250V	15A 250V	15A 250V	15A 250V	15A 250V	10A 250V	
Operation limit voltage (AC.V.rms)	400	400	400	400	400	300	
Withstanding voltage (AC.V.rms) 1 minute	2000	2000	2000	1800	1800	1800	
Insulation resistance (MΩ MIN.) at DC 500V	2000	2000	2000	2000	2000	2000	
Contact resistance (mΩ MAX.) at DC 1A	3	3	3	3	3	3	
Solder inter diameter	2.8	2.8	2.8	2.8	2	2.5	



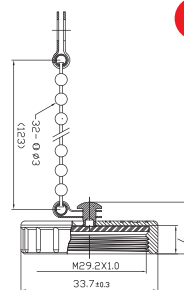
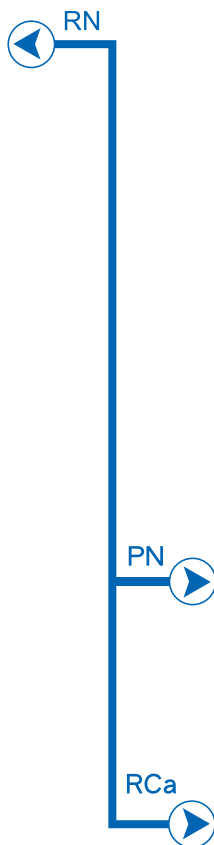
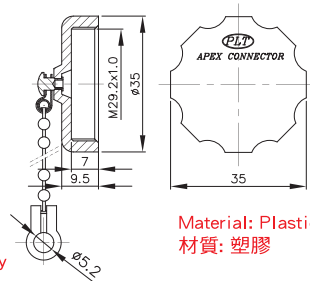
PAT PLT-303-RN-R



PLT- 30 Series



PAT PLT-303-PN-R

Material: Zinc Alloy  
材質: 鋅合金Material: Plastic  
材質: 塑膠

PLT-30C-RCa-R

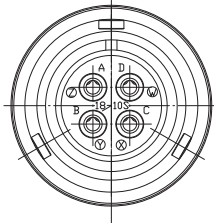
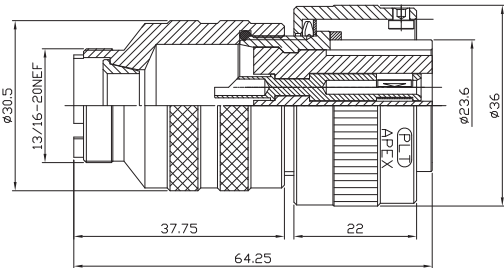


PLT-30A-RCa-R-R

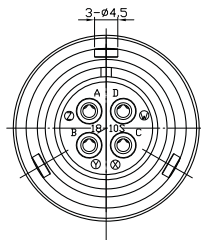
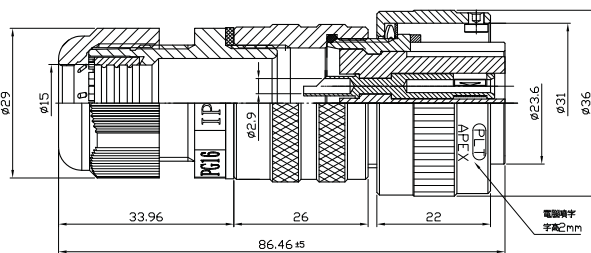
(Screw-Lockup-Contact Model 螺絲鎖附型)

(Patent of invention, all rights reserved 專利產品、仿冒必究)

◆ No. of contacts	3					
Contacts Configuration	 TÜV					
Rated current / voltage	15A 250V					
Operation limit voltage (AC.V.rms)	400					
Withstanding voltage (AC.V.rms) 1 minute	2000					
Insulation resistance (MΩ MIN.) at DC 500V	2000					
Contact resistance (mΩ MAX.) at DC 1A	3					
Solder inter diameter	2.8					



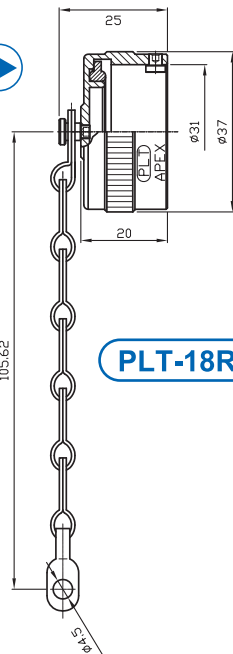
PLT3106A 18-10SA



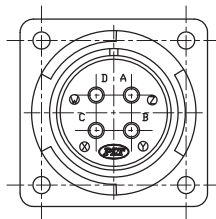
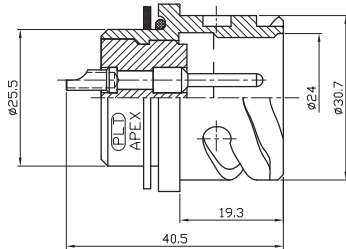
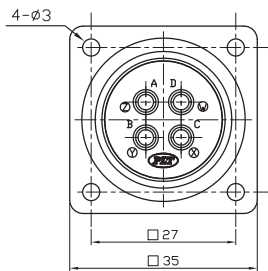
PLT3106A 18-10SC




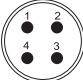
RCa



PLT-18RCa



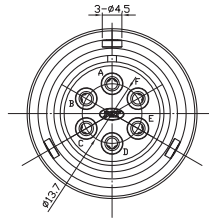
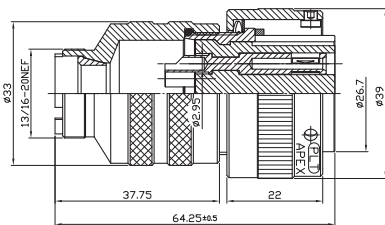
PLT3102A 18-10PA

 No. of contacts	4					
Contacts Configuration						
Withstanding voltage (AC.V.rms) 1 minute	2000					
Insulation resistance (MΩ MIN.) at DC 500V	5000					
Test Current	23					

31

TÜV

IP67 Input Type

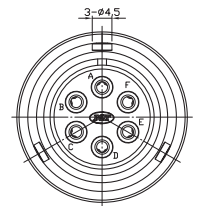
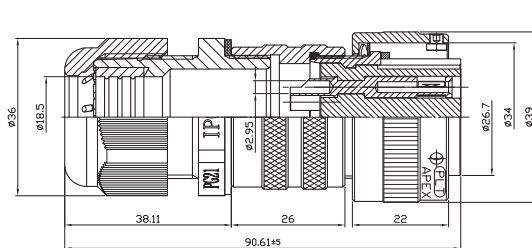
2  
PLT SERIES

PLT- 31 Series

PLT3106A 20-15SA



SA

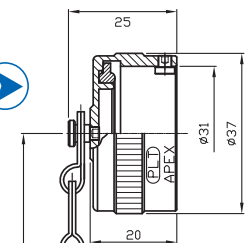


PLT3106A 20-15SC



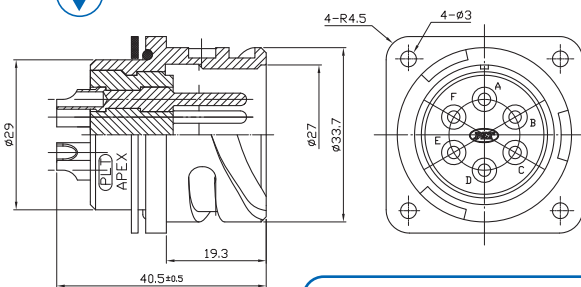
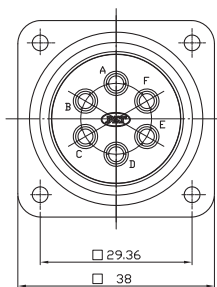
SC

RCa

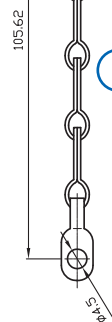



PLT-20RCa

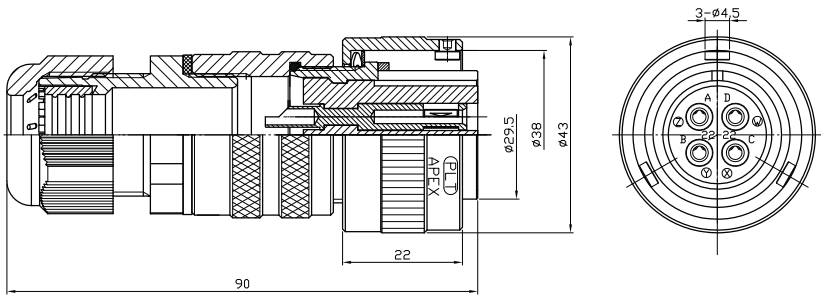
PA



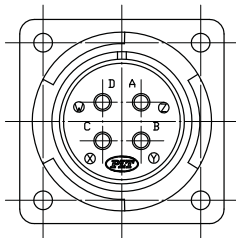
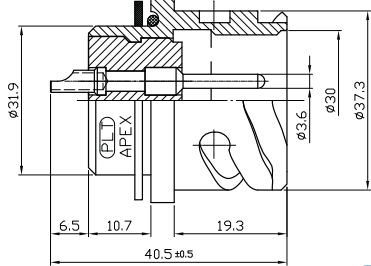
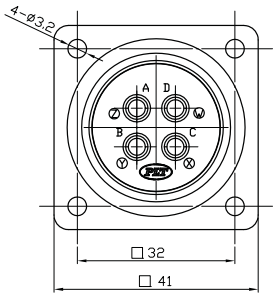
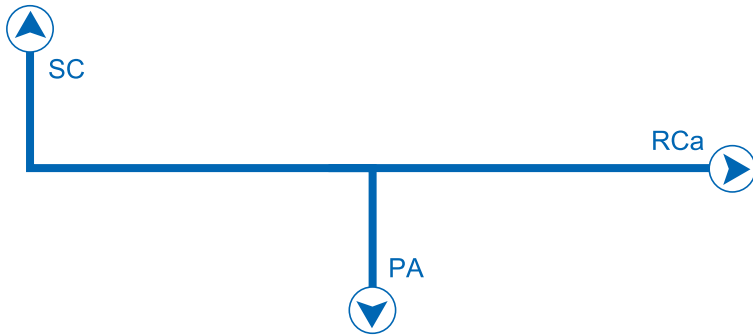
PLT3102A 20-15PA



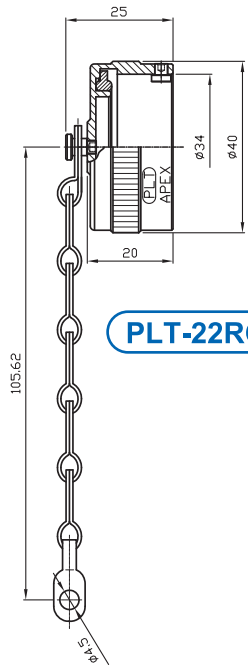
◆ No. of contacts	6					
Contacts Configuration						
Withstanding voltage (AC.V.rms) 1 minute	2000					
Insulation resistance (MΩ MIN.) at DC 500V	5000					
Test Current	23					



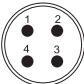
PLT3106A 22-22SC



PLT3102A 22-22PA



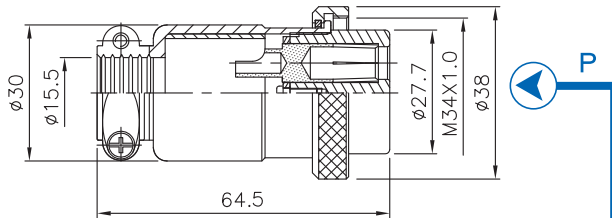
PLT-22RCa

No. of contacts	4					
Contacts Configuration						
Withstanding voltage (AC.V.rms) 1 minute	2000					
Insulation resistance (M $\Omega$ MIN.) at DC 500V	5000					
Test Current	23					

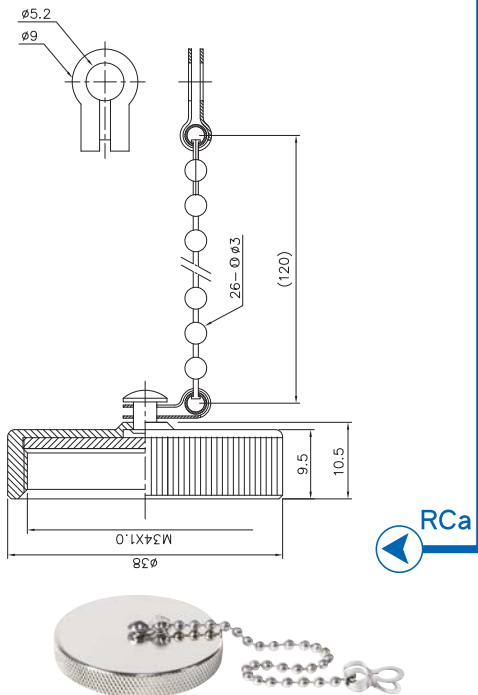
32

TÜV

Input Type

2  
PLT SERIES

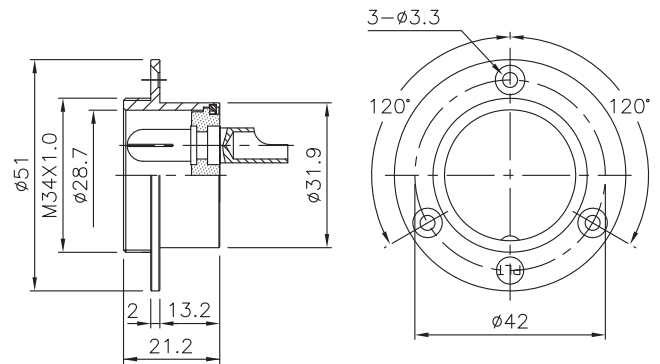
PLT-32-P-R



PLT-32-RCa-R



PLT- 32 Series



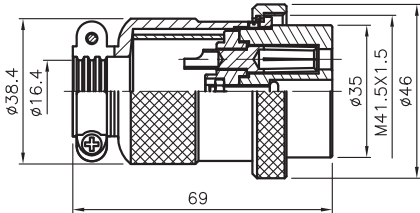
PLT-32-R-R

◆ No. of contacts	2	3				
Contacts Configuration	 TÜV	 TÜV				
Rated current / voltage	30A 250V	30A 250V				
Operation limit voltage (AC.V <sub>rms</sub> )	400	400				
Withstanding voltage (AC.V <sub>rms</sub> ) 1 minute	2000	2000				
Insulation resistance (MΩ MIN.) at DC 500V	2000	2000				
Contact resistance (mΩ MAX.) at DC 1A	5	5				
Solder inter diameter	6	6				



Input Type

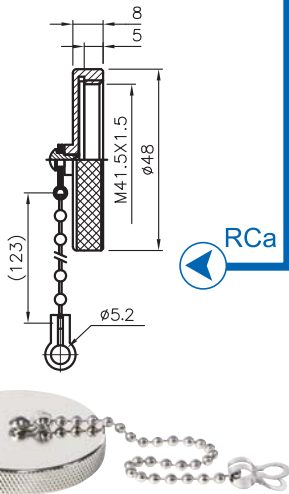
PLT SERIES



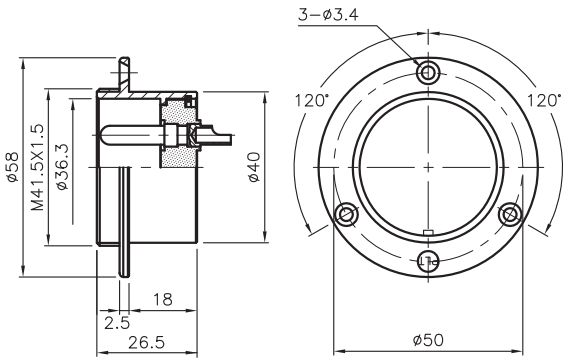
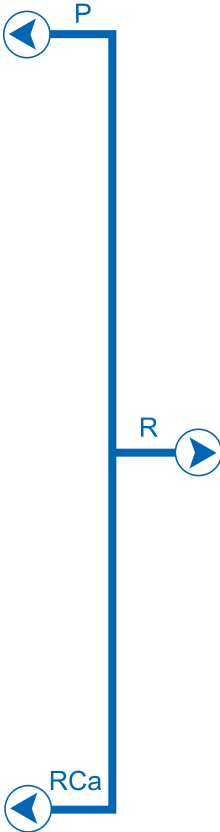
PLT-40-P-R



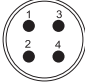
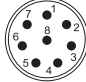

PLT- 40 Series



PLT-40-RCa-R



PLT-40-R-R

◆ No. of contacts	4	8	37			
Contacts Configuration	 TÜV	 TÜV	 TÜV			
Rated current / voltage	30A 250V	20A 250V	5A 300V			
Operation limit voltage (AC.V.rms)	500	400	300			
Withstanding voltage (AC.V.rms) 1 minute	2500	2000	1000			
Insulation resistance (MΩ MIN.) at DC 500V	2000	2000	1800			
Contact resistance (mΩ MAX.) at DC 1A	3	3	3			
Solder inter diameter	4	4.8	1.9			

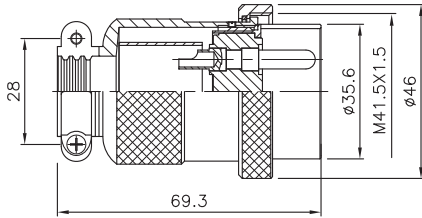
40

TÜV

Output Type

2

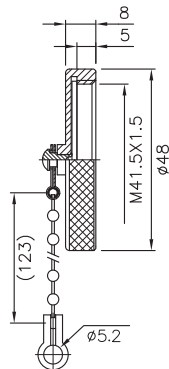
PLT SERIES



PLT-40-PM-R

PM

RF



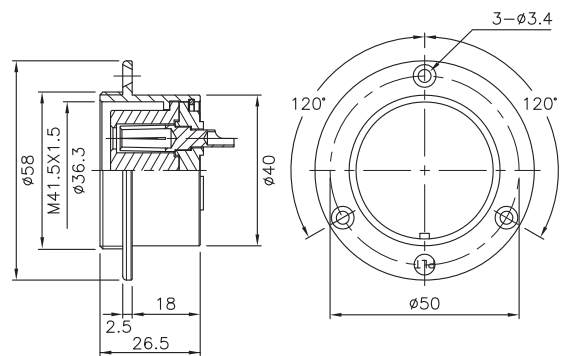
RCa



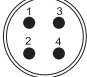

PLT-40-RCa-R



PLT- 40 Series

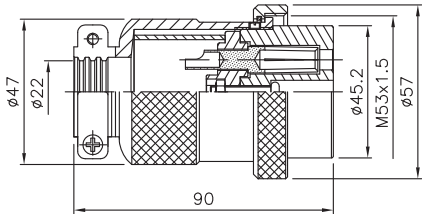


PLT-40-RF-R

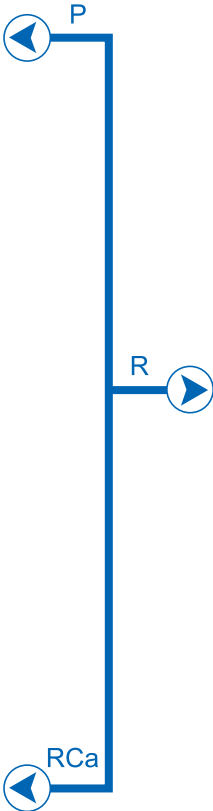
◆ No. of contacts	4	37				
Contacts Configuration	 TÜV	 TÜV				
Rated current / voltage	30A 250V	5A 300V				
Operation limit voltage (AC.V.rms)	500	200				
Withstanding voltage (AC.V.rms) 1 minute	2500	1000				
Insulation resistance (MΩ MIN.) at DC 500V	2000	1800				
Contact resistance (mΩ MAX.) at DC 1A	3	3				
Solder inter diameter	4	1.9				

Input Type

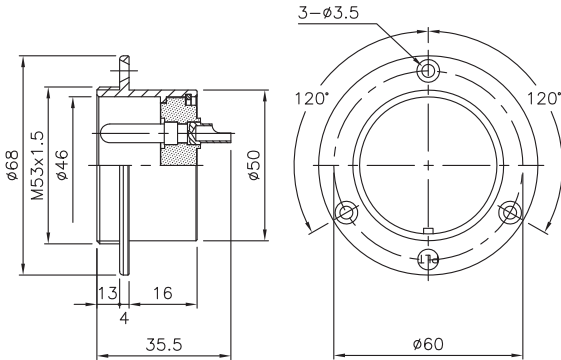
PLT SERIES 2



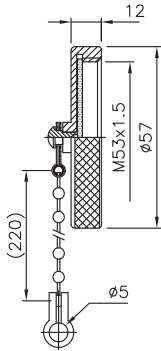
PLT-50-P



PLT- 50 Series

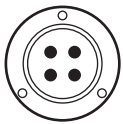


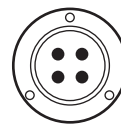
PLT-50-R



PLT-50-RCa

◆ No. of contacts	4					
Contacts Configuration						
Rated current / voltage	80A 250V					
Operation limit voltage (AC.V.rms)	600					
Withstanding voltage (AC.V.rms) 1 minute	3000					
Insulation resistance (MΩ MIN.) at DC 500V	5000					
Contact resistance (mΩ MAX.) at DC 1A	3					
Solder inter diameter						





## ● ORDERING INFORMATION

### PLK-162-P-R

- RoHS COMPLIANT 歐盟環保指令
- CONNECTOR TYPE 連接器類型
- NO. OF CONTACTS 導梢數量
- SHELL SIZE(16,30) 外殼尺寸
- NAME OF SERIES 系列名稱

P	Plug	插 頭	AD	Adapter	中 繼
R	Receptacle	插 座	Ca	Cap	保護蓋
F	Female	導 梢	RT	Rubber tube	橡膠管
M	Male	導 針	G	Conduit type	軟管式

## ● MATERIAL & FINISH

Kindly instruct material & finish by below types when ordering

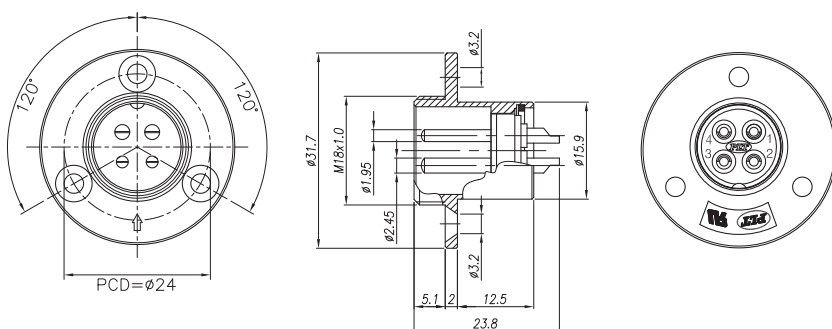
Description	Material	Finish
Shell/外殼、本體	<ul style="list-style-type: none"> <li>▪ Stainless Steel/不鏽鋼</li> <li>▪ Zinc Die-Casting/鋅合金壓鑄</li> <li>▪ Aluminum alloy/鋁合金壓鑄</li> </ul>	<ul style="list-style-type: none"> <li>▪ Chrome-plated/鉻電鍍</li> <li>▪ Gold-plated/金電鍍</li> <li>▪ Nickel-plated/鎳電鍍</li> <li>▪ Silver-plated/銀電鍍</li> </ul>
Insulator/絕緣體	<ul style="list-style-type: none"> <li>▪ Bakelite/電木</li> <li>▪ Delrin/塑鋼</li> <li>▪ Teflon Polyethylene/鐵氟龍</li> </ul>	
Contact/接觸體	<ul style="list-style-type: none"> <li>▪ Brass/銅</li> <li>▪ P.Brass/磷銅</li> <li>▪ B.Brass/鈹銅</li> </ul>	<ul style="list-style-type: none"> <li>▪ Gold-plated/金電鍍</li> <li>▪ Nickel-plated/鎳電鍍</li> <li>▪ Silver-plated/銀電鍍</li> </ul>



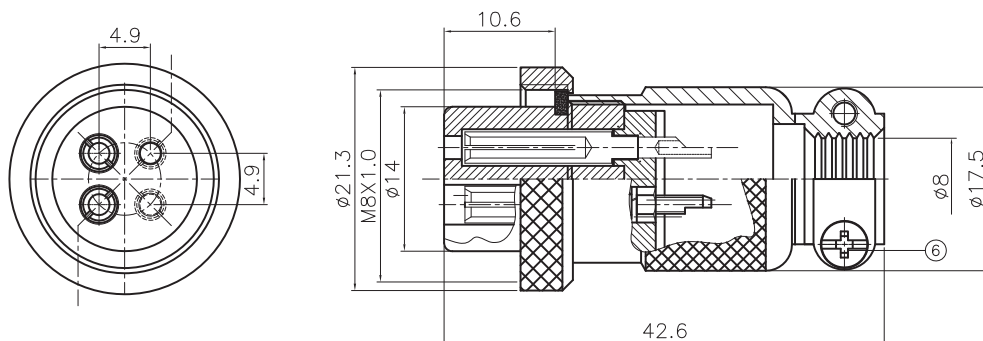
Input Type

3  
PLK SERIES

PLK-16 Series



PLK-164-RA-R



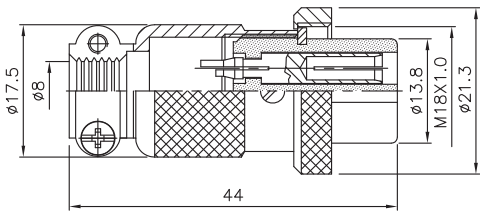
PLK-164-PA-R

◆ No. of contacts	4					
Contacts Configuration	 TÜV					
Rated current / voltage	5A 125V					
Operation limit voltage (AC.V.rms)	200					
Withstanding voltage (AC.V.rms) 1 minute	1000					
Insulation resistance (MΩ MIN.) at DC 500V	1000					
Contact resistance (mΩ MAX.) at DC 1A	3					

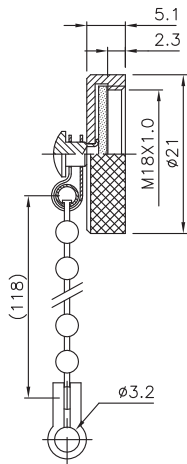


Input Type

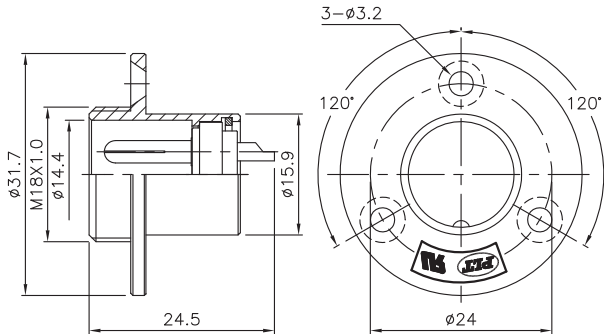
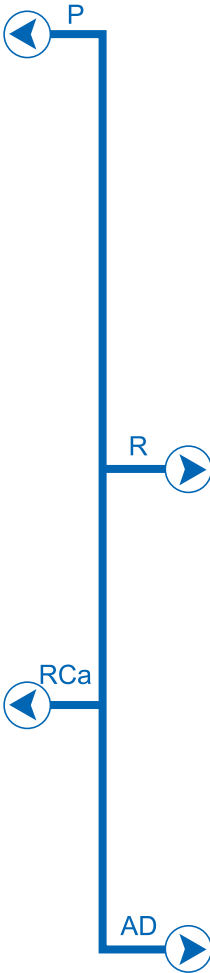
3  
PLK SERIES



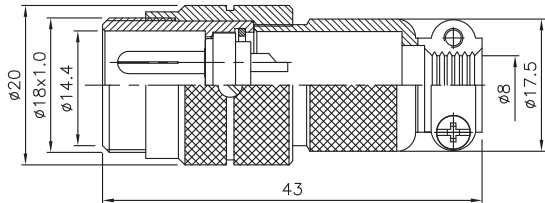
PLK-16-P-R



PLK-16-RCa-R







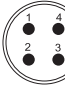



PLK-16-R-R

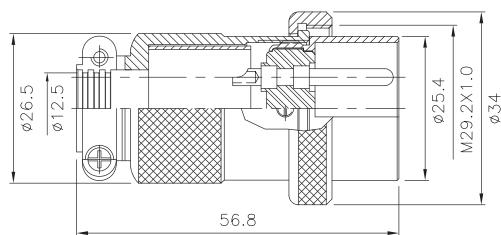


PLK-16-AD-R

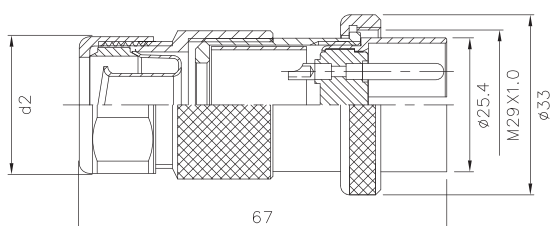


PLK- 16 Series

◆ No. of contacts	2	3	4	5		
Contacts Configuration	 TÜV 	 TÜV 	 TÜV 	 TÜV 		
Rated current / voltage	5A 125V	5A 125V	5A 125V	5A 125V		
Operation limit voltage (AC.V.rms)	200	200	200	200		
Withstanding voltage (AC.V.rms) 1 minute	1000	1000	1000	1000		
Insulation resistance (MΩ MIN.) at DC 500V	1000	1000	1000	1000		
Contact resistance (mΩ MAX.) at DC 1A	3	3	3	3		
Solder inter diameter	1.5	1.5	1.5	1.3		



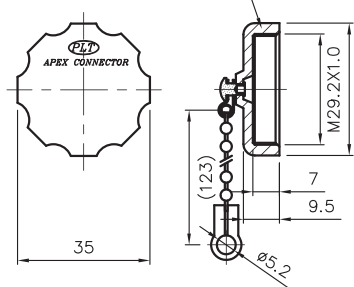
PLK-30-PM-R



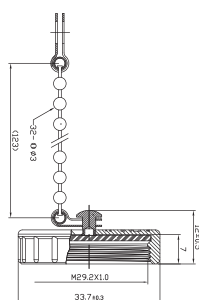
3	3/8" 軟管	d1	d2
		ø10.8	ø26.3
4	1/2" 軟管	d1	d2
		ø14.3	ø31.2

PLK-30-GPM-R

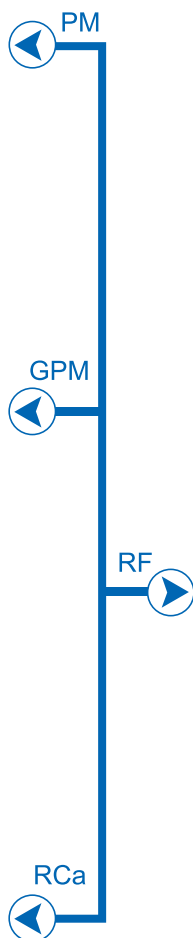
MATERIAL: ABS(BLACK)

Material: Plastic  
材質: 塑膠

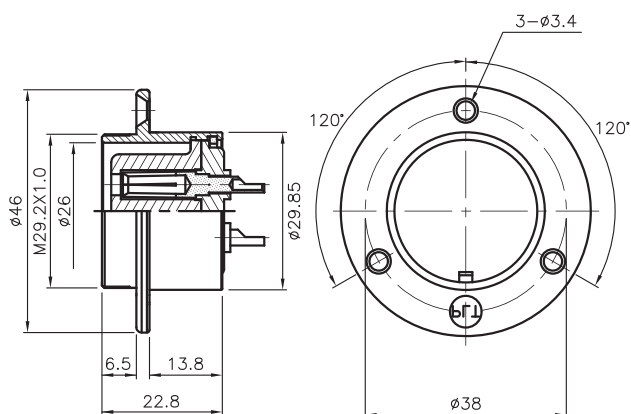
PAT PLT-30A-RCa-R

Material: Zinc Alloy  
材質: 鋅合金

PLT-30C-RCa-R

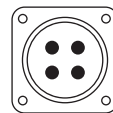


PLK- 30 Series



PLK-30-RF-R

◆ No. of contacts	4	7				
Contacts Configuration	 TÜV	 TÜV				
Rated current / voltage	15A 250V	15A 250V				
Operation limit voltage (AC.V.rms)	400	400				
Withstanding voltage (AC.V.rms) 1 minute	2000	1800				
Insulation resistance (MΩ MIN.) at DC 500V	2000	2000				
Contact resistance (mΩ MAX.) at DC 1A	3	3				
Solder inter diameter	3.5	3				



## PLS Series 方型連接器

PLS SERIES 4



PLS-20 Series



PLS-24 Series



PLS-27 Series



PLS-28 Series



(Stainless Steel 不鏽鋼)

PLS-28 Series



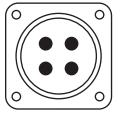
PLS-35 Series



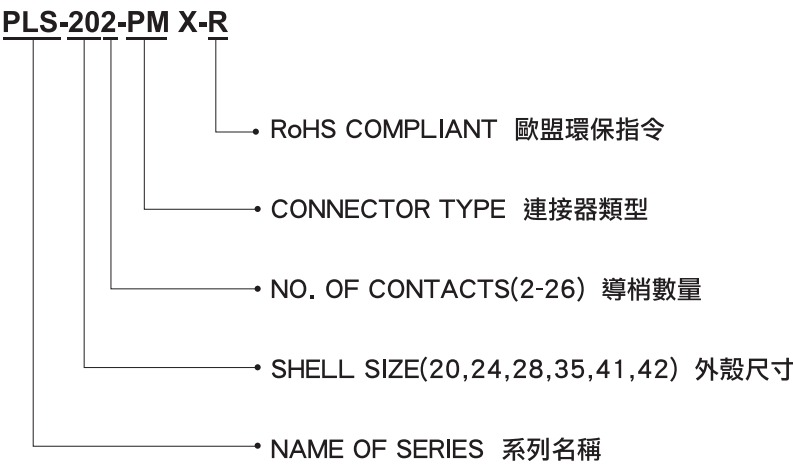
PLS-41 Series



PLS-4207 Series



● ORDERING INFORMATION



P	Plug	插 頭	AD	Adapter	中 繼
R	Receptacle	插 座	Ca	Cap	保護蓋
F	Female	導 梢	RT	Rubber tube	橡膠管
M	Male	導 針	G	Conduit type	軟管式

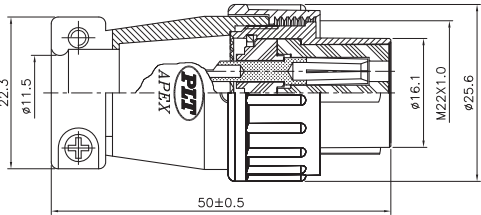
● MATERIAL & FINISH

Kindly instruct material & finish by below types when ordering

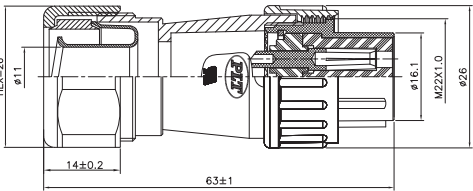
Description	Material	Finish
Shell/外殼、本體	<ul style="list-style-type: none"><li>Stainless Steel/不鏽鋼</li><li>Zinc Die-Casting/鋅合金壓鑄</li><li>Aluminum alloy/鋁合金壓鑄</li></ul>	<ul style="list-style-type: none"><li>Chrome-plated/鉻電鍍</li><li>Gold-plated/金電鍍</li><li>Nickel-plated/鎳電鍍</li><li>Silver-plated/銀電鍍</li></ul>
Insulator/絕緣體	<ul style="list-style-type: none"><li>Bakelite/電木</li><li>Delrin/塑鋼</li><li>Teflon Polyethylene/鐵氟龍</li></ul>	
Contact/接觸體	<ul style="list-style-type: none"><li>Brass/銅</li><li>P.Brass/磷銅</li><li>B.Brass/鈹銅</li></ul>	<ul style="list-style-type: none"><li>Gold-plated/金電鍍</li><li>Nickel-plated/鎳電鍍</li><li>Silver-plated/銀電鍍</li></ul>



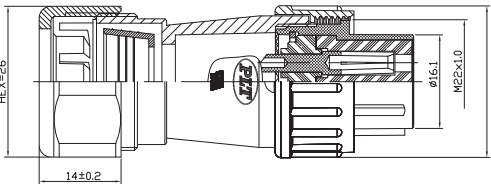
Input Type



PLS-20♦-PF X-R



PLS-20♦-GPF3 X-R 3=轉接3/8”軟管

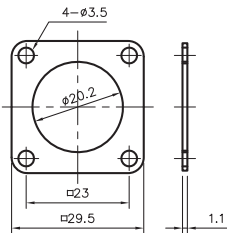


PLS-20♦-WGPF3 X-R 3=轉接3/8”尼龍管

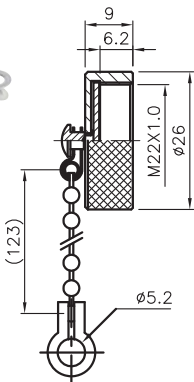


PLS-20-RCa-R

ACCESSORY:



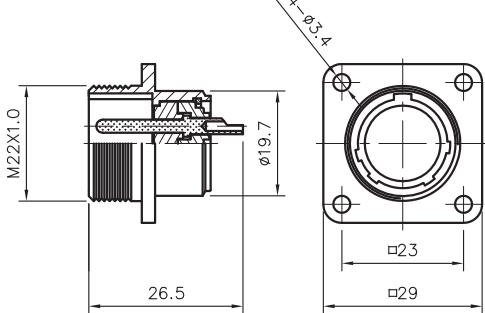
RUBBER PLATE FOR PLS-20♦-RM



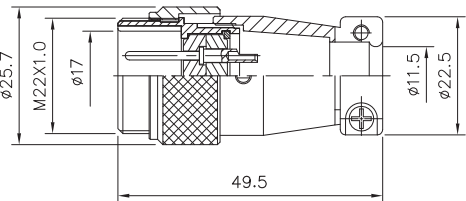
RUBBER TUBE FOR PLS-20♦-PF



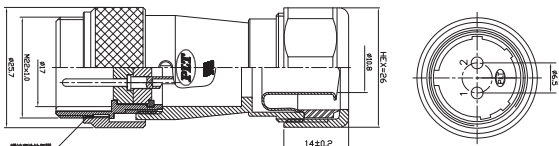
PLS- 20 Series



PLS-20♦-RM-R



PLS-20♦-ADM-R



PLS-20♦-ADGM-R

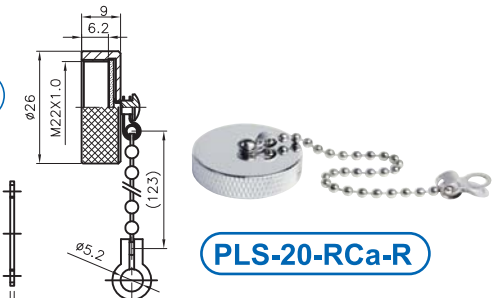
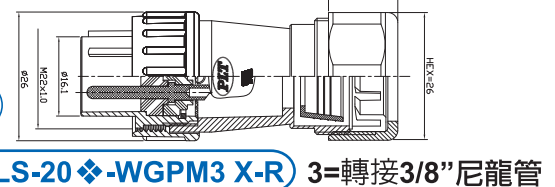
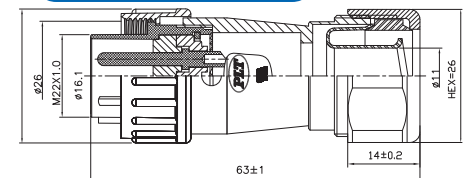
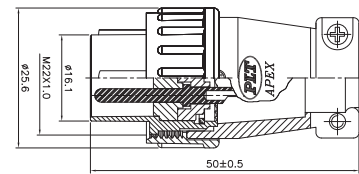
♦ No. of contacts	2	3	4	7		
Contacts Configuration	 TUV	 TUV	 TUV	 TUV		
Rated current / voltage	15A 250V	15A 250V	10A 250V	10A 250V		
Operation limit voltage (AC.V.rms)	250	250	250	250		
Withstanding voltage (AC.V.rms) 1 minute	1500	1500	1000	1000		
Insulation resistance (MΩ MIN.) at DC 500V	2000	2000	2000	2000		
Contact resistance (mΩ MAX.) at DC 1A	3	3	3	3		
Solder inter diameter	1.8	1.8	1.6	1.6		



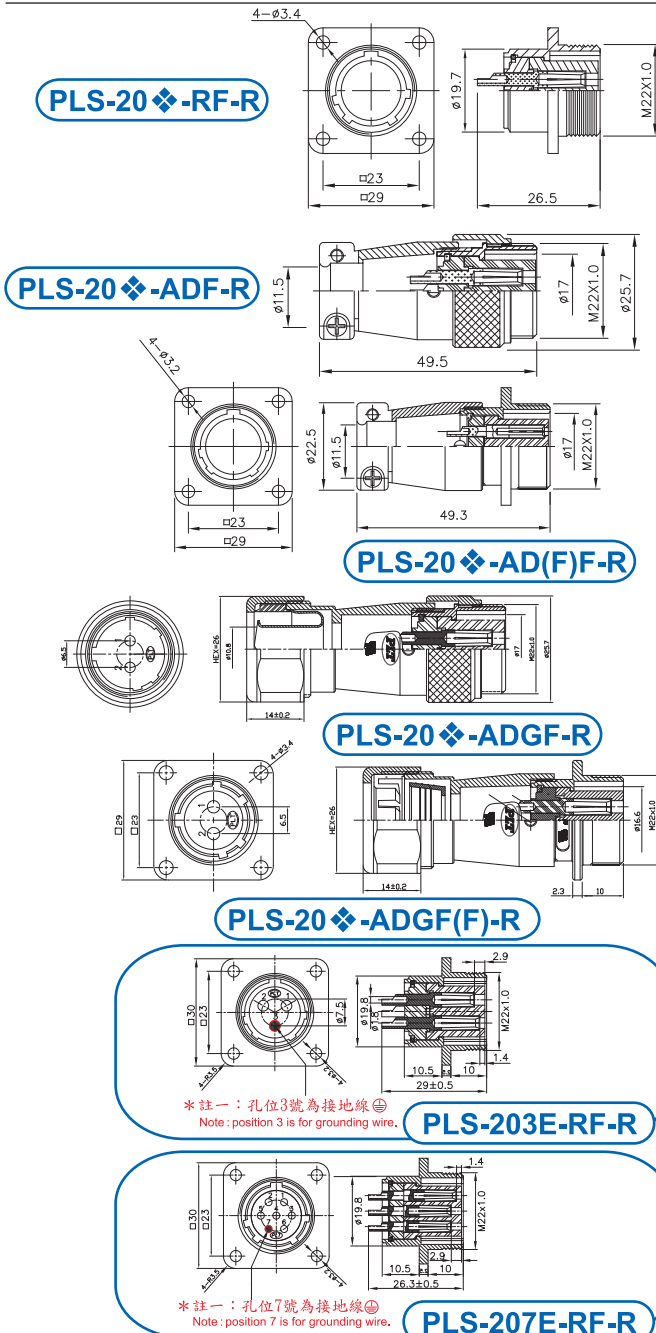
TÜV  
UL

Output Type

4  
PLS SERIES



RUBBER TUBE FOR PLS-20-RCa-R



RUBBER PLATE FOR PLS-20-PM

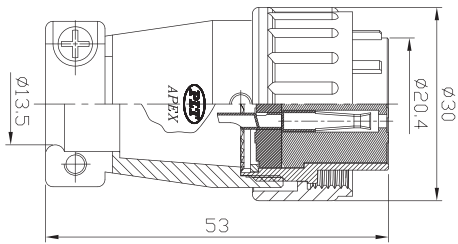
◆ No. of contacts	2	3	4	7		
Contacts Configuration						
Rated current / voltage	15A 250V	15A 250V	10A 250V	10A 250V		
Operation limit voltage (AC.V.rms)	250	250	250	250		
Withstanding voltage (AC.V.rms) 1 minute	1500	1500	1500	1000		
Insulation resistance (MΩ MIN.) at DC 500V	2000	2000	2000	2000		
Contact resistance (mΩ MAX.) at DC 1A	3	3	3	3		
Solder inter diameter	1.8	1.8	1.6	1.6		



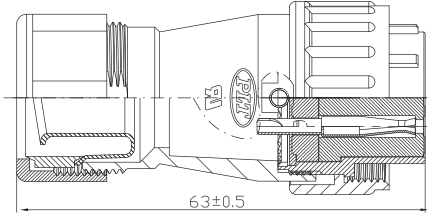


Input Type

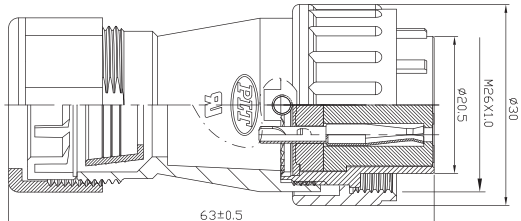
PLS SERIES 4



PLS-24-PF X-R



PLS-24-GPF3 X-R 3=轉接3/8"軟管

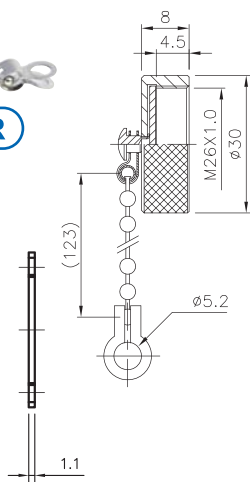
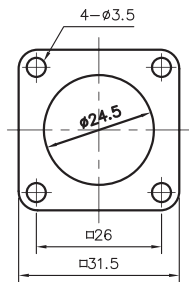


PLS-24-WGPF3 X-R 3=轉接3/8"尼龍管

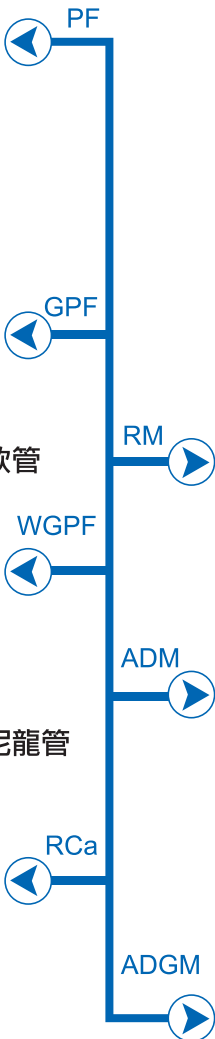


PLS-24-RCa-R

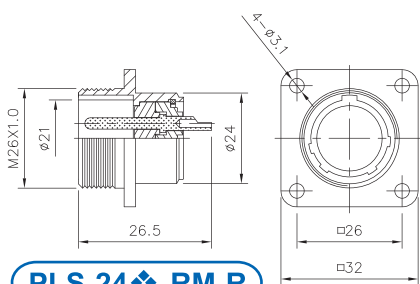
ACCESSORY:



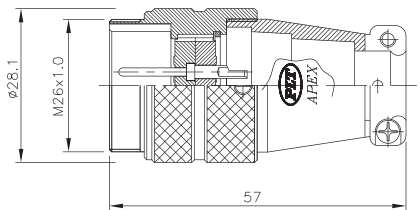
RUBBER PLATE FOR PLS-24-RCa-R



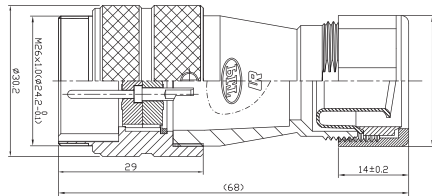
PLS- 24 Series



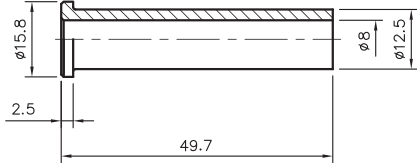
PLS-24-RM-R



PLS-24-ADM-R

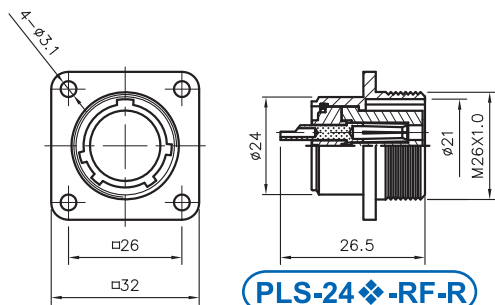


PLS-24-ADGM-R

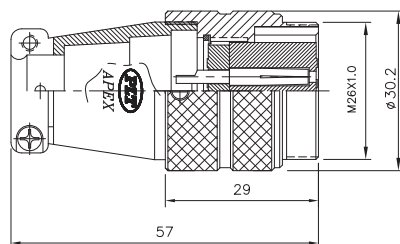


RUBBER TUBE FOR PLS-24-PF

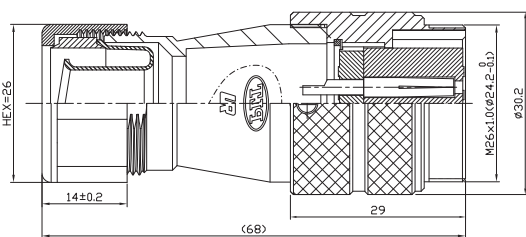
◆ No. of contacts	5	10				
Contacts Configuration						
Rated current / voltage	15A 250V	10A 250V				
Operation limit voltage (AC.V.rms)	400	250				
Withstanding voltage (AC.V.rms) 1 minute	1800	1000				
Insulation resistance (MΩ MIN.) at DC 500V	2000	2000				
Contact resistance (mΩ MAX.) at DC 1A	3	3				
Solder inter diameter	2.8	1.6				



PLS-24-RF-R

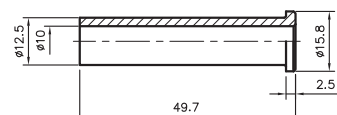


PLS-24-ADF-R

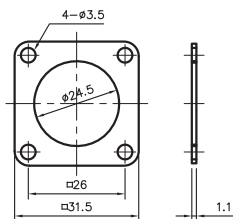


PLS-24-ADGF-R

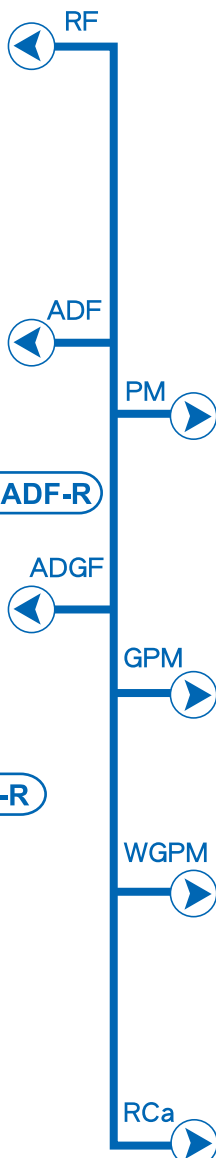
ACCESSORY:



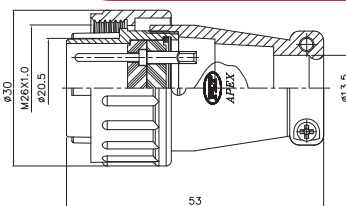
RUBBER TUBE FOR PLS-24-PM



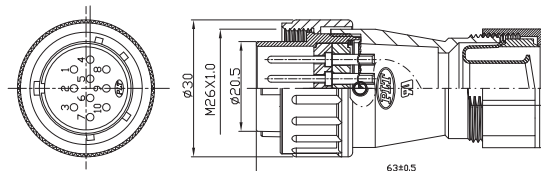
RUBBER PLATE FOR PLS-24-RF



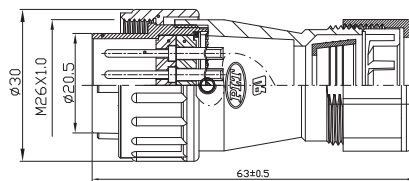
PLS- 24 Series



PLS-24-PM X-R

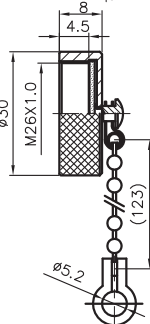


PLS-24-GPM3 X-R 3=轉接3/8"軟管



PLS-24-WGPM3 X-R

3=轉接3/8"尼龍管



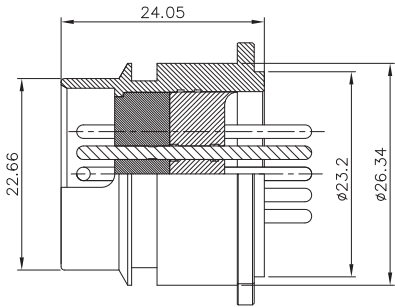
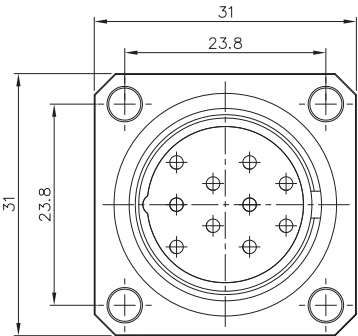
PLS-24-RCa-R

◆ No. of contacts	5	10				
Contacts Configuration						
Rated current / voltage	15A 250V	10A 250V				
Operation limit voltage (AC.V.rms)	400	250				
Withstanding voltage (AC.V.rms) 1 minute	1800	1000				
Insulation resistance (MΩ MIN.) at DC 500V	2000	2000				
Contact resistance (mΩ MAX.) at DC 1A	3	3				
Solder inter diameter	2.8	1.6				

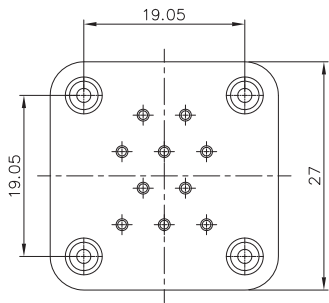
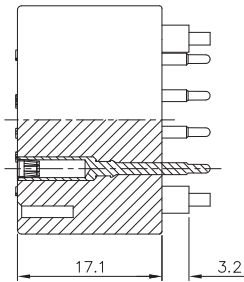
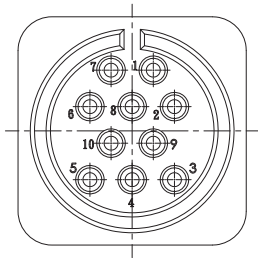
Output Type



PLS SERIES 4

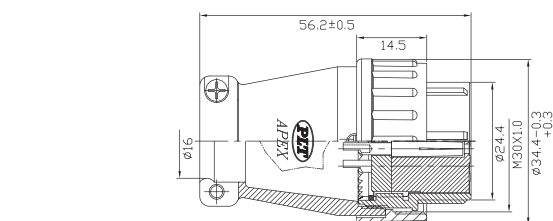


PLS-2710-RM

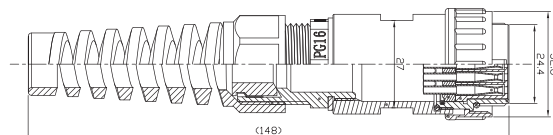


PLS-2710-PF

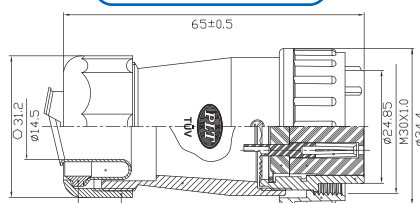
◆ No. of contacts	10					
Contacts Configuration						
Rated current / voltage	5A 250V					
Operation limit voltage (AC.V.rms)	250					
Withstanding voltage (AC.V.rms) 1 minute	1000					
Insulation resistance (MΩ MIN.) at DC 500V	1000					
Contact resistance (mΩ MAX.) at DC 1A	5					
Solder inter diameter						



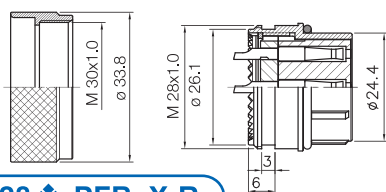
PLS-28♦-PF X-R



PLS-28♦-PFD



PLS-28♦-GPF4 X-R 4=轉接1/2"軟管

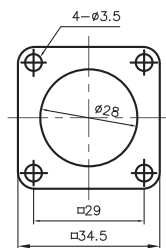


PLS-28♦-PFB X-R

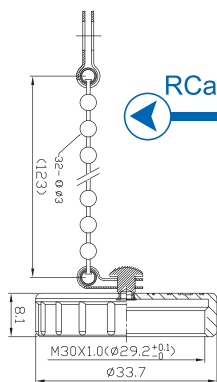


ACCESSORY:

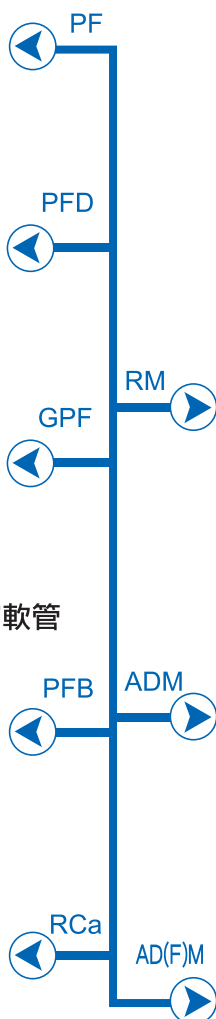
PLS-28C-RCa-R



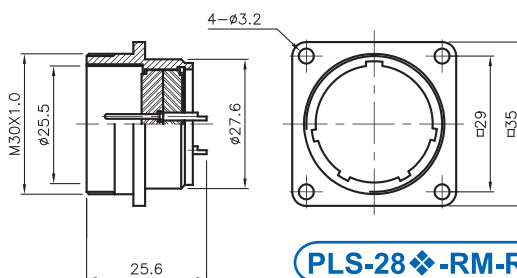
RUBBER PLATE FOR PLS-28♦-RM



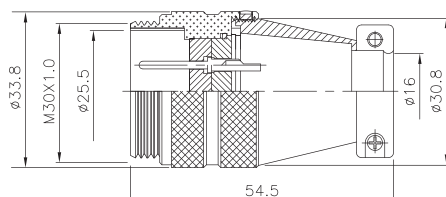
RUBBER TUBE FOR PLS-28♦-PF



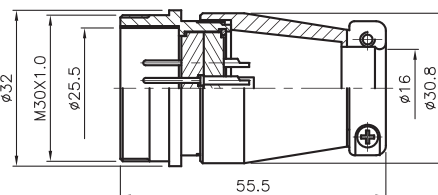
PLS- 28 Series



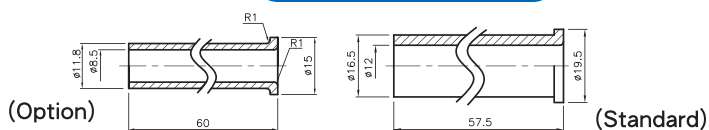
PLS-28♦-RM-R



PLS-28♦-ADM-R



PLS-28♦-AD(F)M-R

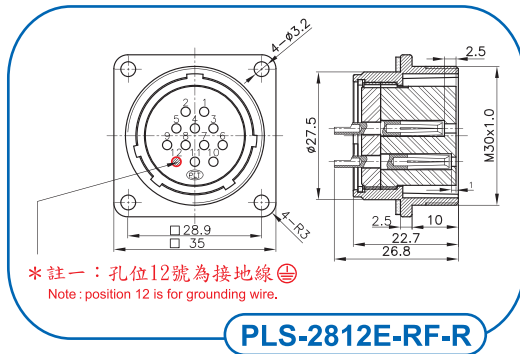
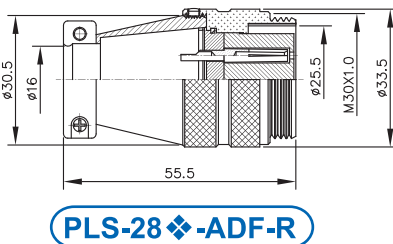
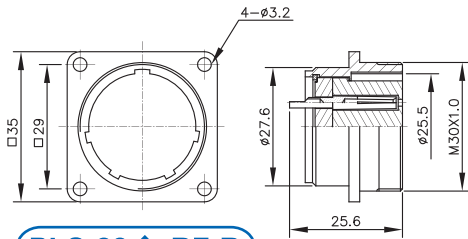


(Option)

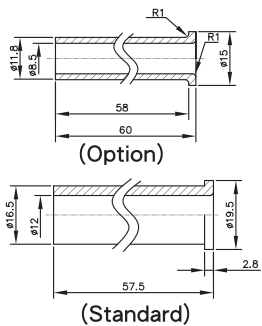
(Standard)

♦ No. of contacts	3	4	7	12	16	17	20	26
Contacts Configuration								
Rated current / voltage	15A 250V	15A 250V	15A 250V	10A 250V	10A 250V	10A 250V	5A 250V	5A 250V
Operation limit voltage (AC.V <sub>rms</sub> )	400	400	400	250	250	250	250	250
Withstanding voltage (AC.V <sub>rms</sub> ) 1 minute	2000	2000	1800	1000	1000	1000	1000	1000
Insulation resistance (MΩ MIN.) at DC 500V	2000	2000	2000	1000	1000	1000	1000	1000
Contact resistance (mΩ MAX.) at DC 1A	3	3	3	5	5	5	3	3
Solder inter diameter	3.4	3.4	2.4	1.6	1.6	1.6	1.2	1.2

## Output Type

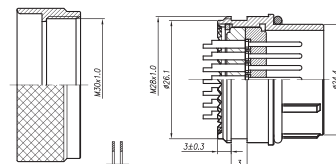
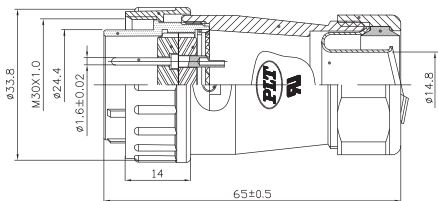
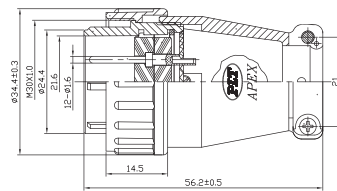
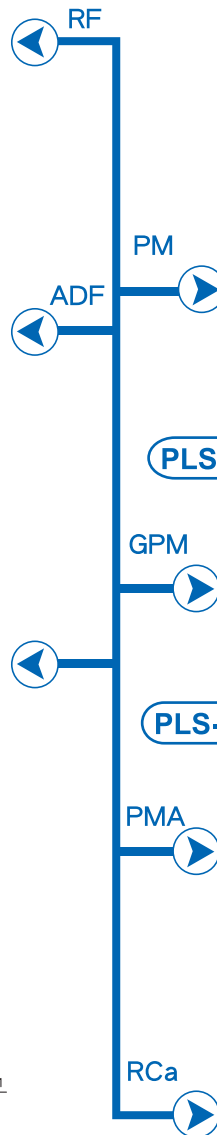


## ACCESSORY:

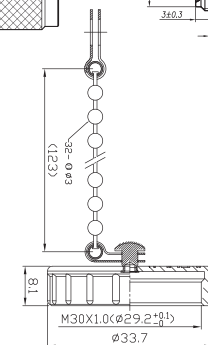


RUBBER PLATE FOR PLS-28-RF

RUBBER TUBE FOR PLS-28-PM



PLS-28-PMA XB-R

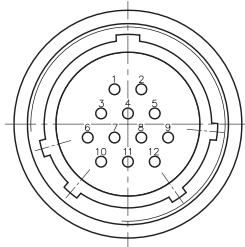
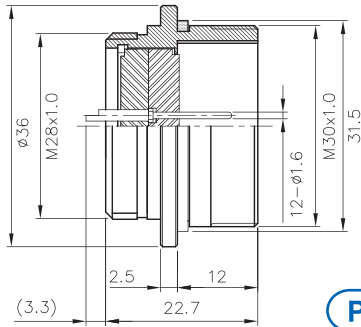


PLS-28C-RCa-R

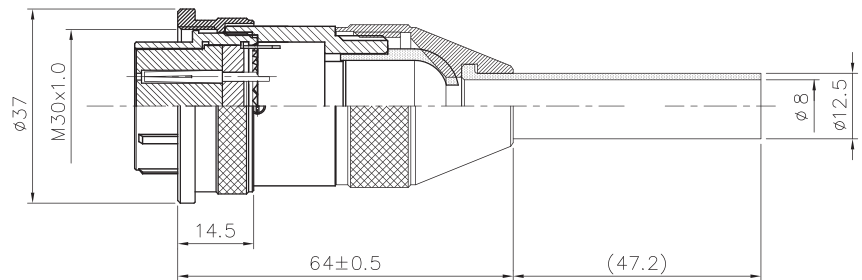
◆ No. of contacts	3	4	7	12	16	17	20	26
Contacts Configuration								
	TÜV	TÜV	TÜV	TÜV	TÜV	TÜV	TÜV	TÜV
Rated current / voltage	15A 250V	15A 250V	15A 250V	10A 250V	10A 250V	10A 250V	5A 250V	5A 250V
Operation limit voltage (AC.V.rms)	400	400	400	250	250	250	250	250
Withstanding voltage (AC.V.rms) 1 minute	2000	2000	1800	1000	1000	1000	1000	1000
Insulation resistance (MΩ MIN.) at DC 500V	2000	2000	2000	1000	1000	1000	1000	1000
Contact resistance (mΩ MAX.) at DC 1A	3	3	3	5	5	5	3	3
Solder inter diameter	3.4	3.4	2.4	1.6	1.6	1.6	1.2	1.2



Input Type

4  
PLS SERIES

PLS-28-RMA-R



PLS-28-PFA-R

(Stainless Steel 不鏽鋼)

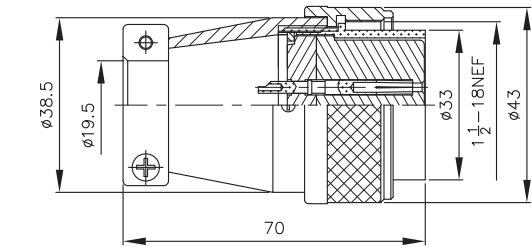
◆ No. of contacts	12	16	17	20	26		
Contacts Configuration							
	TÜV	TÜV	TÜV	TÜV	TÜV		
Rated current / voltage	10A 250V	10A 250V	10A 250V	5A 250V	5A 250V		
Operation limit voltage (AC.V.rms)	250	250	250	250	250		
Withstanding voltage (AC.V.rms) 1 minute	1000	1000	1000	1000	1000		
Insulation resistance (M $\Omega$ MIN.) at DC 500V	1000	1000	1000	1000	1000		
Contact resistance (m $\Omega$ MAX.) at DC 1A	5	5	5	3	3		
Solder inter diameter	1.6	1.6	1.6	1.2	1.2		



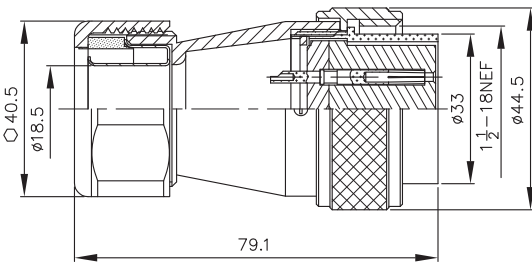


Input Type

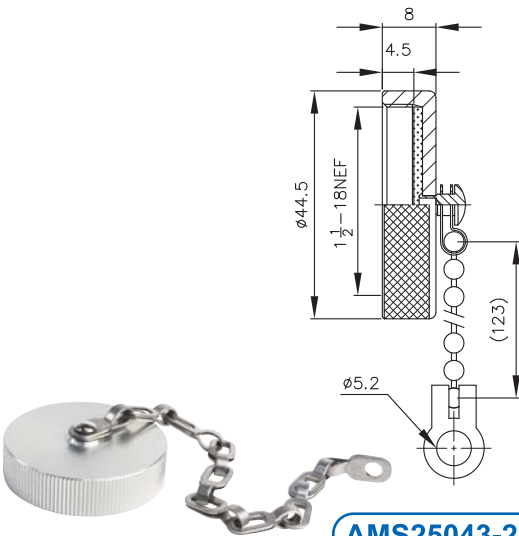
PLS SERIES 4



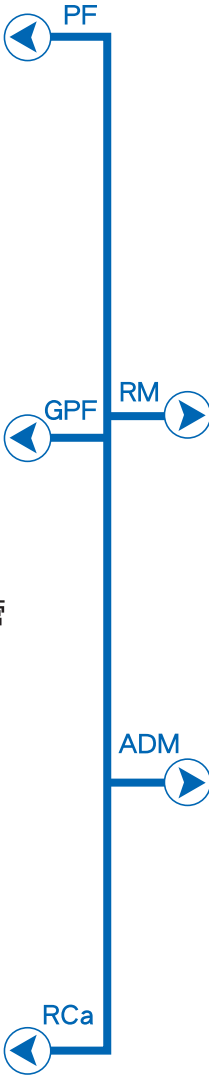
PLS-35-PF-R



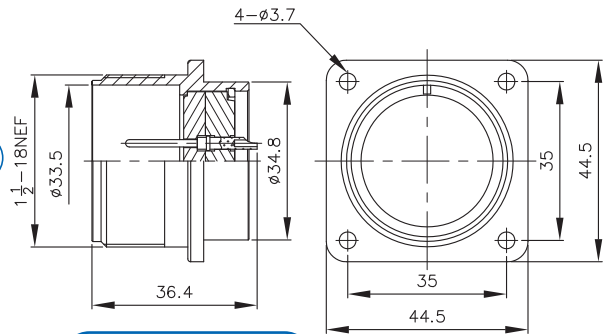
PLS-35-GPF6-R 6=轉接3/4"軟管



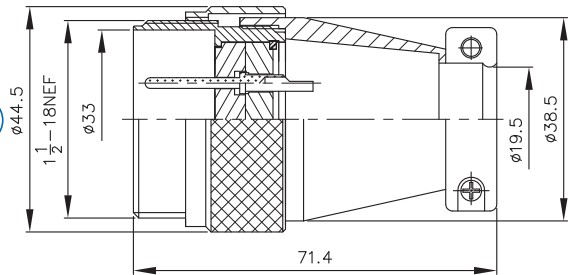
AMS25043-24A



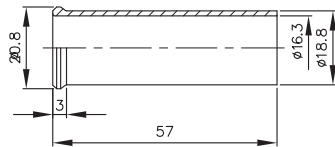
PLS-35 Series



PLS-35-RM-R

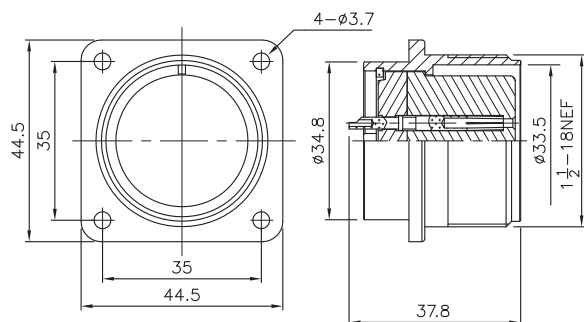


PLS-35-ADM-R

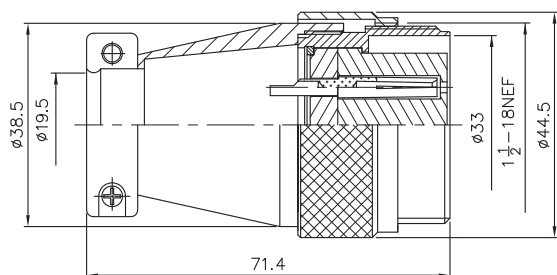


RUBBER TUBE :  
ACCESSORY FOR PLS-35-P

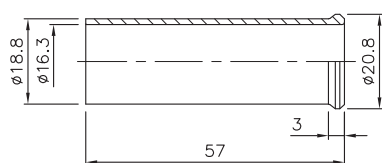
◆ No. of contacts	24						
Contacts Configuration							
Rated current / voltage	8A 250V						
Operation limit voltage (AC.V.rms)	200						
Withstanding voltage (AC.V.rms) 1 minute	1000						
Insulation resistance (MΩ MIN.) at DC 500V	1000						
Contact resistance (mΩ MAX.) at DC 1A	3						
Solder inter diameter	1.8						



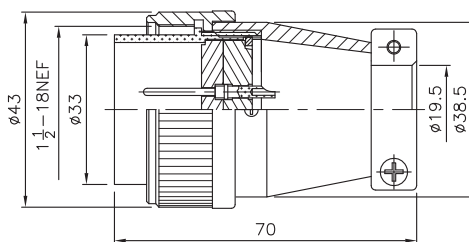
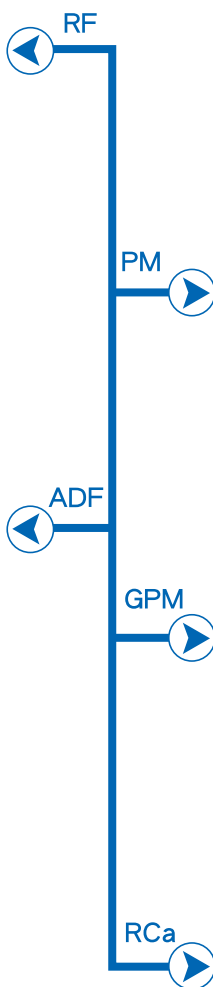
PLS-35◆-RF-R



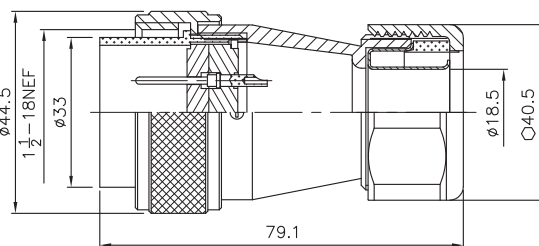
PLS-35◆-ADF-R



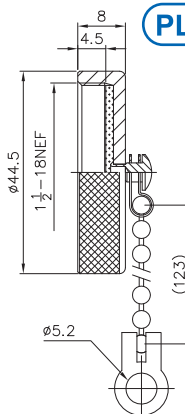
RUBBER TUBE :  
ACCESSORY FOR PLS-35◆-PM



PLS-35◆-PM-R



PLS-35◆-GPM6-R 6=轉接3/4"軟管



AMS25043-24A

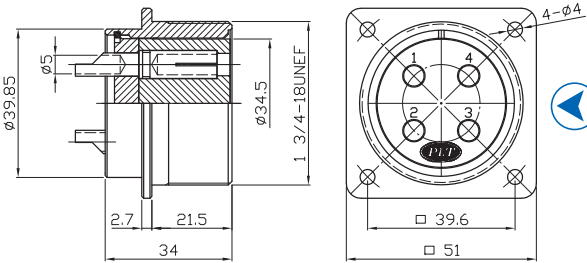


PLS-35 Series

◆ No. of contacts	24					
Contacts Configuration	 					
Rated current / voltage	8A 250V					
Operation limit voltage (AC.V.rms)	200					
Withstanding voltage (AC.V.rms) 1 minute	1000					
Insulation resistance (MΩ MIN.) at DC 500V	1000					
Contact resistance (mΩ MAX.) at DC 1A	3					
Solder inter diameter	1.8					

Input Type / Output Type

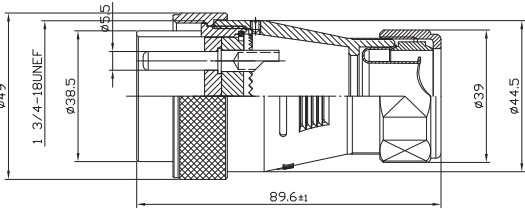
PLS SERIES 4



PLS-41 ♦-RF-R

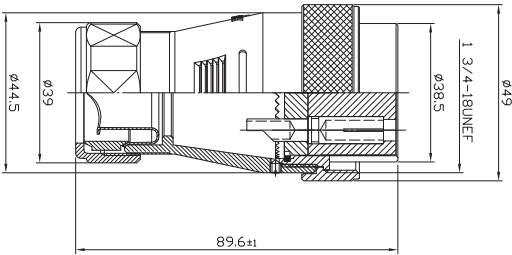


PLS-41 Series



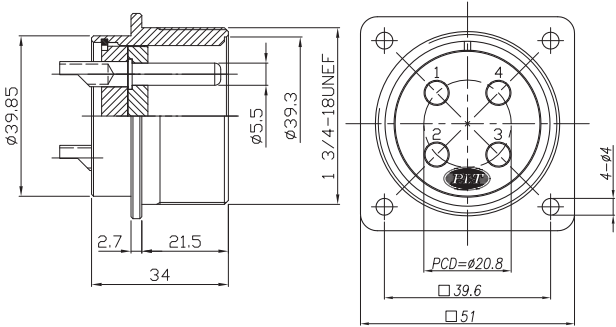
PLS-41 ♦-GPM6-R

6=轉接3/4"軟管



PLS-41 ♦-GPF6-R

6=轉接3/4"軟管

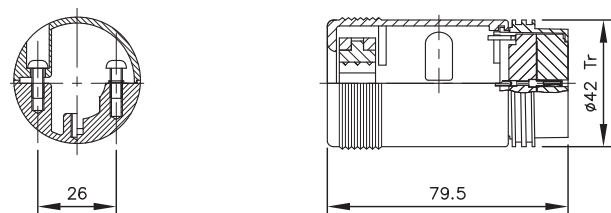


PLS-41 ♦-RM-R

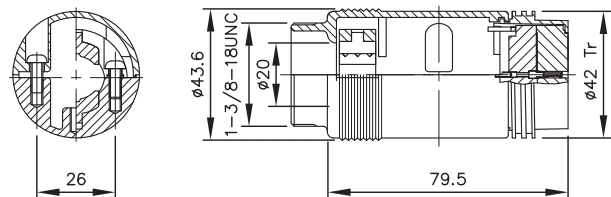
◆ No. of contacts	4	8				
Contacts Configuration						
Rated current / voltage	30A 250V	15A 250V				
Operation limit voltage (AC.V.rms)	500	400				
Withstanding voltage (AC.V.rms) 1 minute	2500	2000				
Insulation resistance (MΩ MIN.) at DC 500V	2500	2000				
Contact resistance (mΩ MAX.) at DC 1A	3	3				
Solder inter diameter	5	3.5				



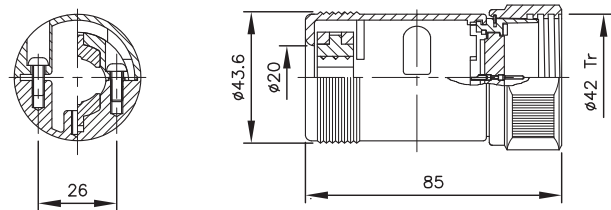
## Input Type / Output Type



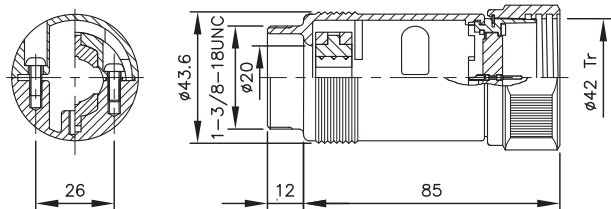
PLS-42 ◆-PF



PLS-42 ◆-PF1

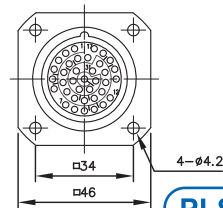
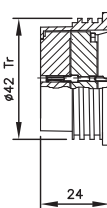
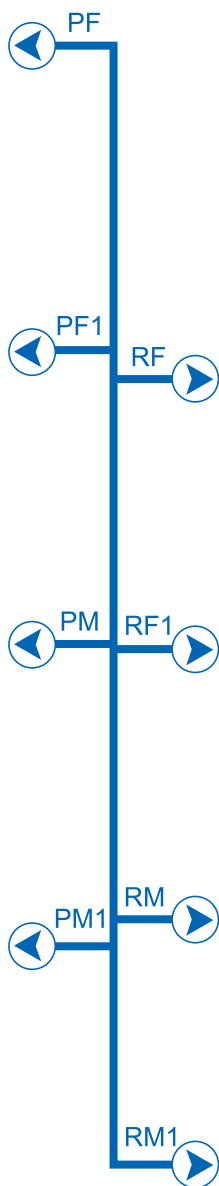
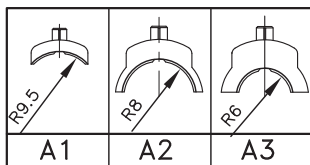


PLS-42 ◆-PM

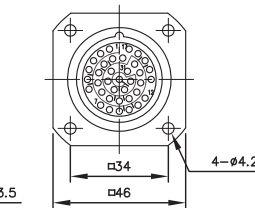
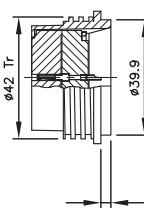


PLS-42 ◆-PM1

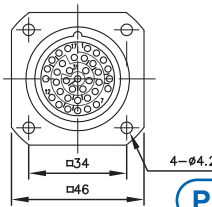
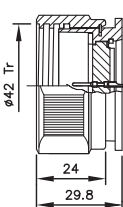
WIRE CLAMP:



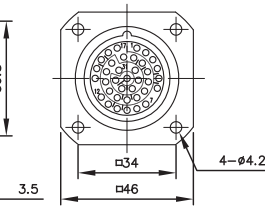
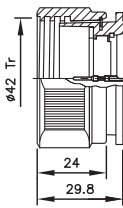
PLS-42 ◆-RF



PLS-42 ◆-RF1



PLS-42 ◆-RM



PLS-42 ◆-RM1



PLS-42 Series

4  
PLS SERIES

◆ No. of contacts	7	37				
Contacts Configuration						
Rated current / voltage	13A 250V	5A 250V				
Operation limit voltage (AC.V,rms)	500	500				
Withstanding voltage (AC.V,rms) 1 minute	2000	3000				
Insulation resistance (MΩ MIN.) at DC 500V	2000	2000				
Contact resistance (mΩ MAX.) at DC 1A	3	3				
Solder inter diameter	3.5	1.2				



PLP Series



PLP-141P20 Series



PLP-154P6 Series



PLT-A128-ADF-R Series



WPM- 20 Series



WPM- 20 Series



WPM- 21 Series



WPM- 30 Series



WPS- 23 Series



M-6029 Series



PLTS-40 Series



5

COMPLEX SERIES

## ORDERING INFORMATION

### PLP-116A - 16B

16B : 16 POLE HOOD      16M : 16 POLE MALE INSERT  
 16C : 16 POLE HOUSING      16F : 16F POLE FEMALE INSERT  
 24B : 24 POLE HOOD      24M : 24 POLE MALE INSERT  
 24C : 24 POLE HOUSING      24F : 24 POLE FEMALE INSERT

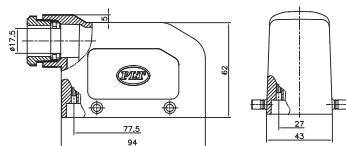
NUMBER OF CONTACTS

SERIES

Rated Current : 16A max  
 Rated Voltage : 380 ~ 450V  
 Withstandinf Voltage : 3000V  
 (AC. V. r.m.s) 1 Minute  
 Contact Resistance : 1 mΩ  
 (mΩ Max) at DC 1A  
 Insulation Resistance : 5000 mΩ  
 Water Protection : IP65  
 Temperature Range : -40°C ~ 125°C

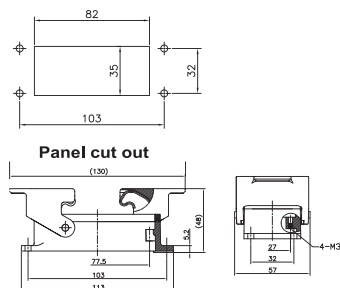
### HOODS

#### PLP-116A-16B



### HOUSING

#### PLP-116A-16C

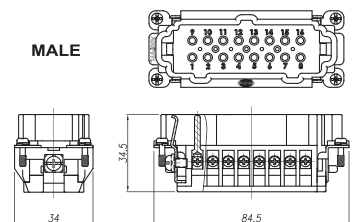


### MALE INSERT

#### PLP-116A-16M



MALE

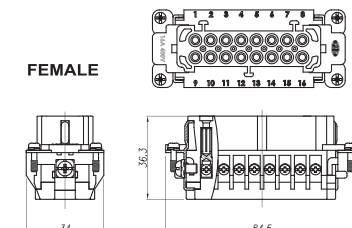


### FEMALE INSERT

#### PLP-116A-16F



FEMALE





PLP Series

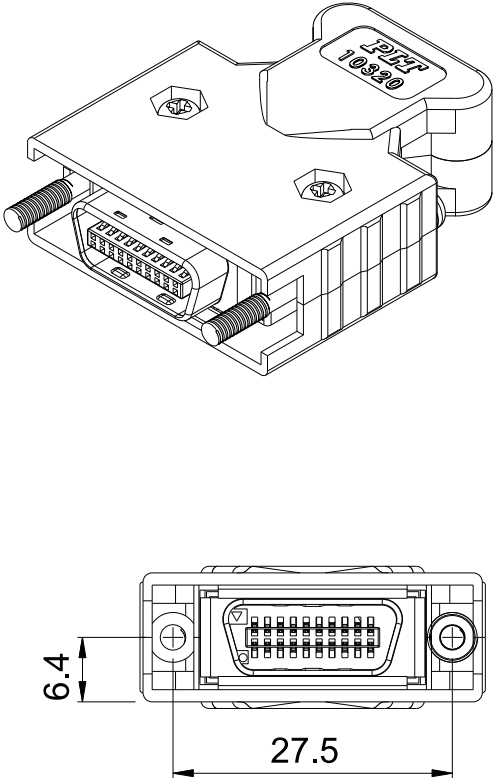
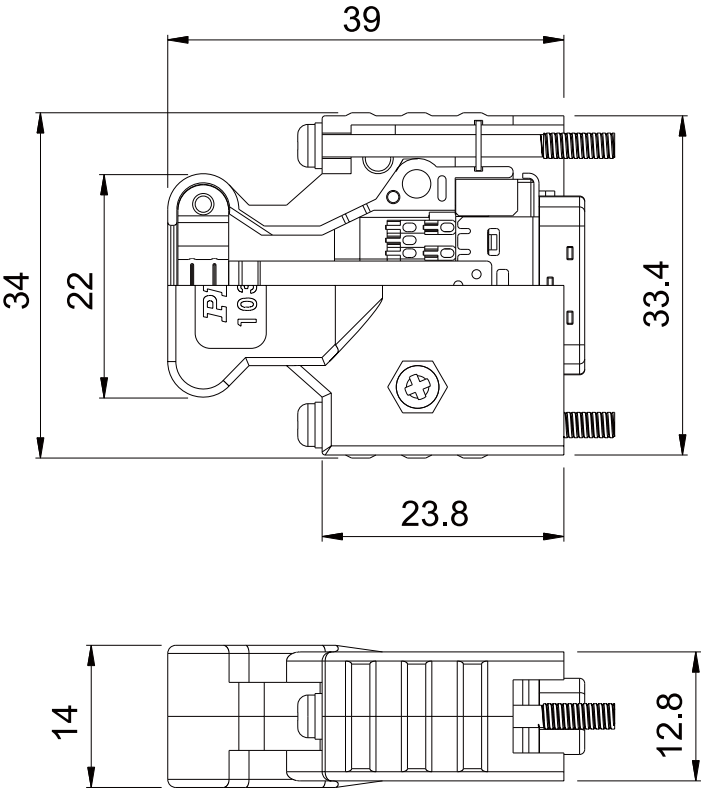


COMPLEX SERIES - PLP SERIES

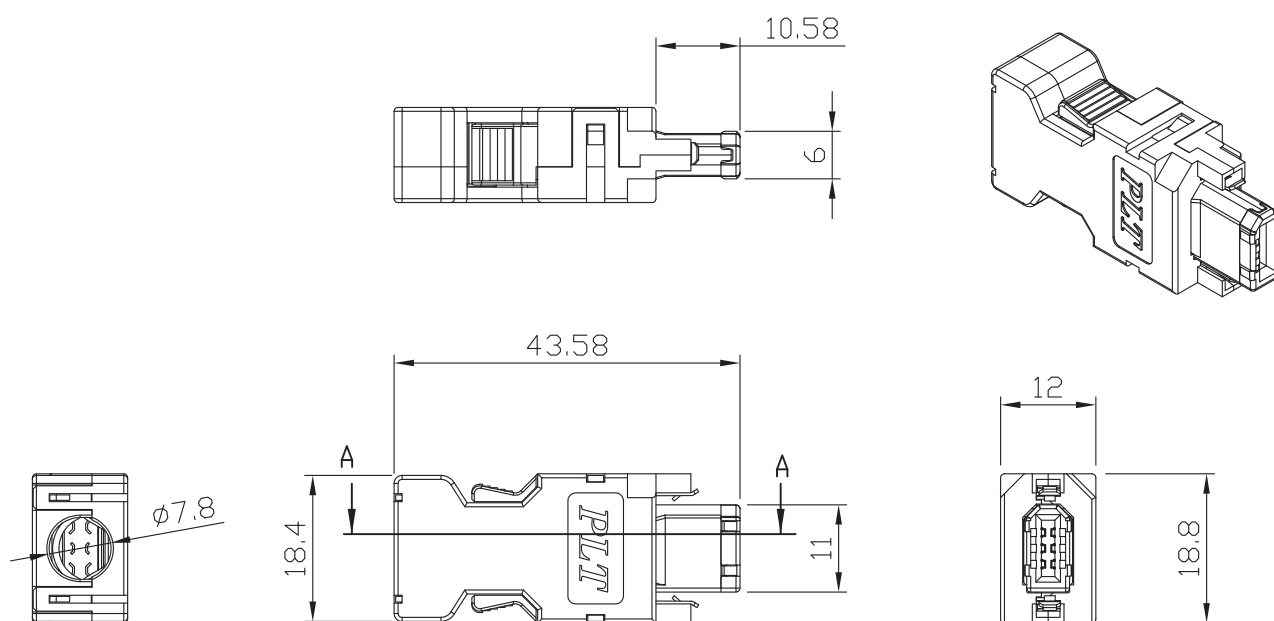
5




PLP-141P20 Series



◆ No. of contacts	20					
Contacts Configuration						
Rated current	1A					
Withstanding voltage (AC.V.rms) 1 minute	500					
Insulation resistance (MΩ MIN.) at DC 500V	>1 X 10 <sup>8</sup> Ω					

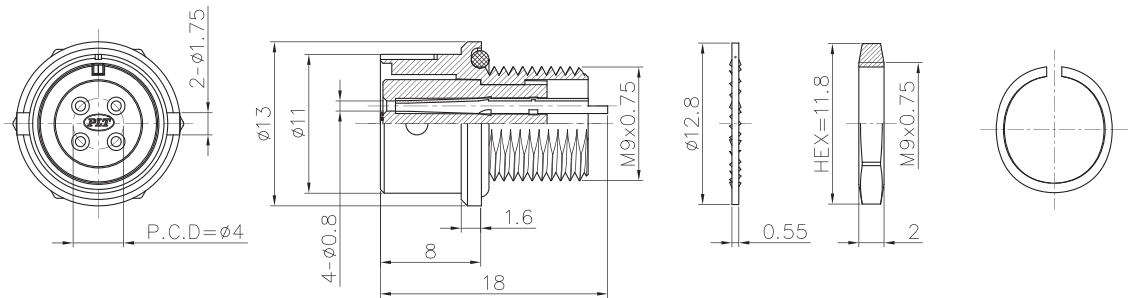
5  
PLP SERIES

◆ No. of contacts	6					
Contacts Configuration						
Rated current / voltage						
Operation limit voltage (AC.V.rms)						
Withstanding voltage (AC.V.rms) 1 minute	350					
Insulation resistance (MΩ MIN.) at DC 500V	1000					
Contact resistance (mΩ MAX.) at DC 1A	20					

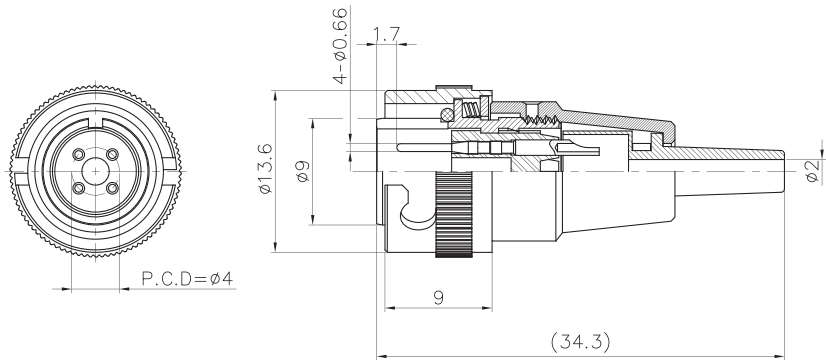
WPM Series - New Products



WPM-94 Series



WPM-94-RF-R



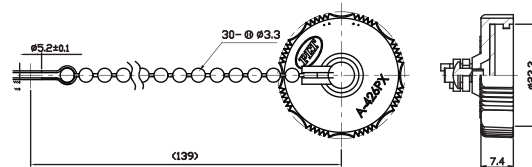
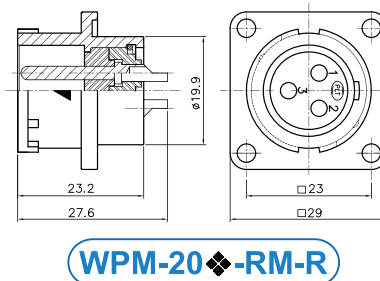
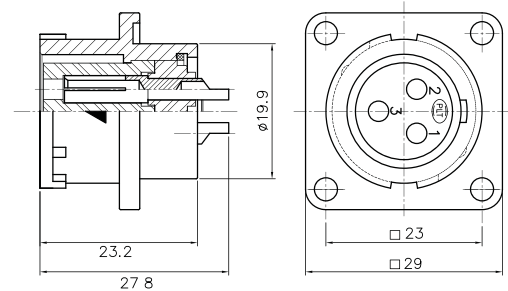
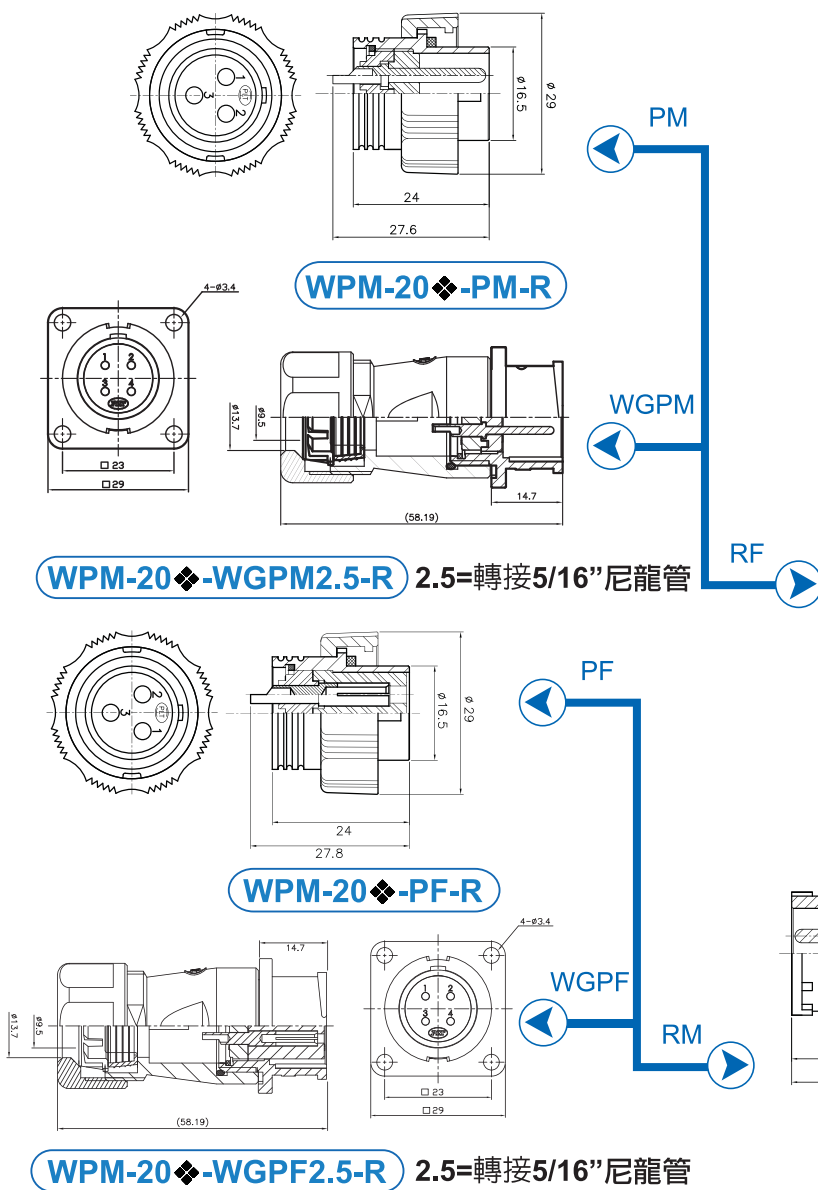
WPM-94-PM-R

◆ No. of contacts	4					
Contacts Configuration						
Rated Current / Voltage	1A 300V					
Operation Limit Voltage(AC. V. rms)	AC 100V DC 140V					
Withstanding Voltage(AC. V. rms) 1 minute	300					
Insulation Resistance ( MΩ min.) at DC 1A	200					
Contact Resistance ( MΩ MAX.) at DC 1A	10					

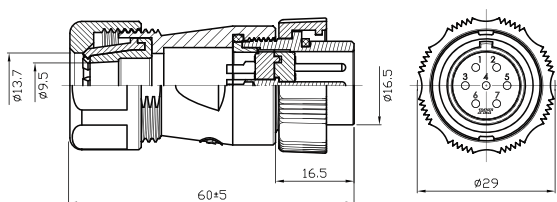
20

cUL<sup>®</sup> TUV

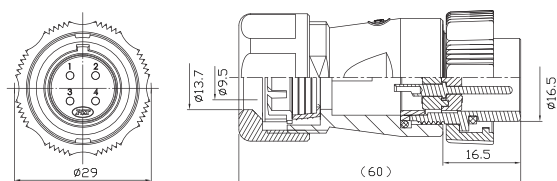
IP 65



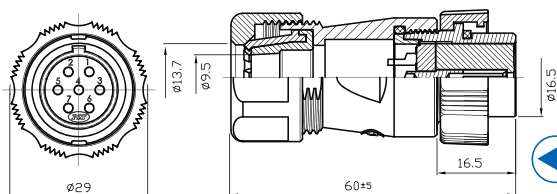
◆ No. of contacts	2	3	4	7		
Contacts Configuration						
Rated current / voltage	15A 250V	15A 250V	15A 250V	15A 250V		
Operation limit voltage (AC.V,rms)	250	250	250	250		
Withstanding voltage (AC.V,rms) 1 minute	1500	1500	1000	1000		
Insulation resistance (MΩ MIN.) at DC 500V	2000	2000	1000	2000		
Contact resistance (mΩ MAX.) at DC 1A	3	3	5	3		



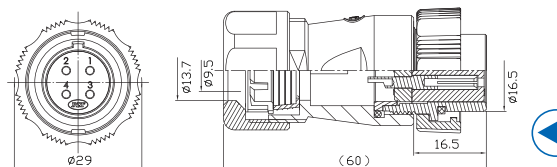
WPM-20-SPM-R



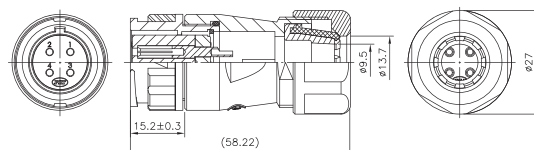
WPM-20-WSPM2.5-R 2.5=轉接5/16"尼龍管



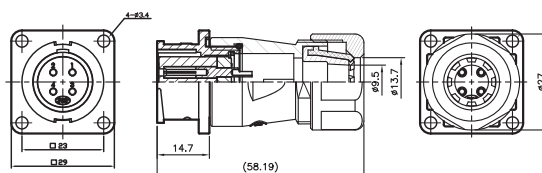
WPM-20-SPF-R



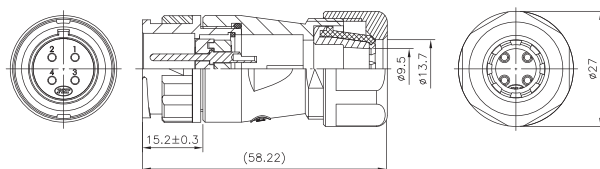
WPM-20-WSPF2.5-R 2.5=轉接5/16"尼龍管



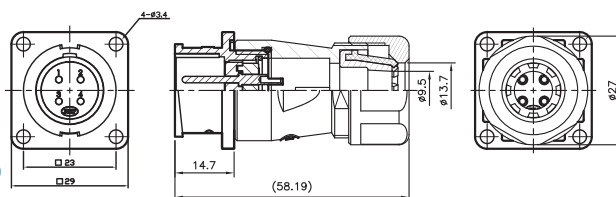
WPM-20-ADF-R




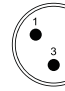
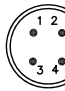

WPM-20-ADFA-R



WPM-20-ADM-R

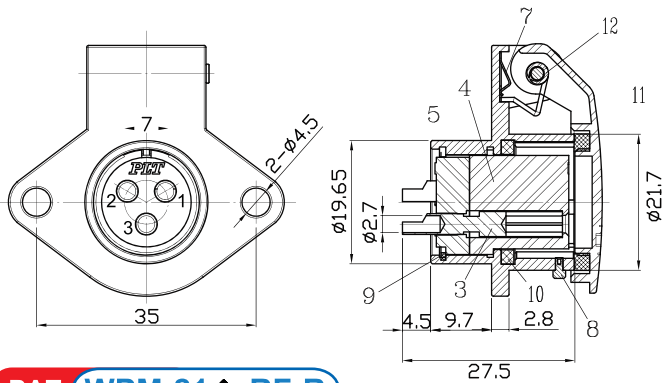


WPM-20-ADMA-R

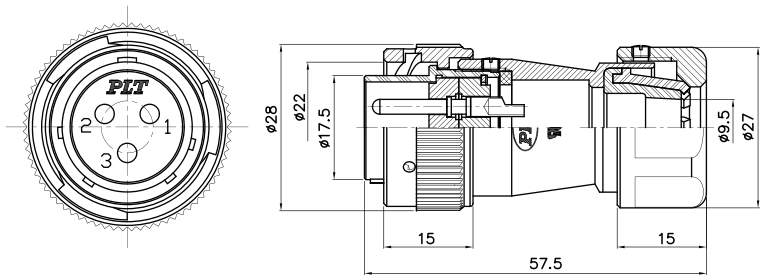
◆ No. of contacts	2	3	4	7		
Contacts Configuration						
Rated current / voltage	15A 250V	15A 250V	15A 250V	15A 250V		
Operation limit voltage (AC.V <sub>rms</sub> )	250	250	250	250		
Withstanding voltage (AC.V <sub>rms</sub> ) 1 minute	1500	1500	1000	1000		
Insulation resistance (MΩ MIN.) at DC 500V	2000	2000	1000	2000		
Contact resistance (mΩ MAX.) at DC 1A	3	3	5	3		



5  
WPM SERIES



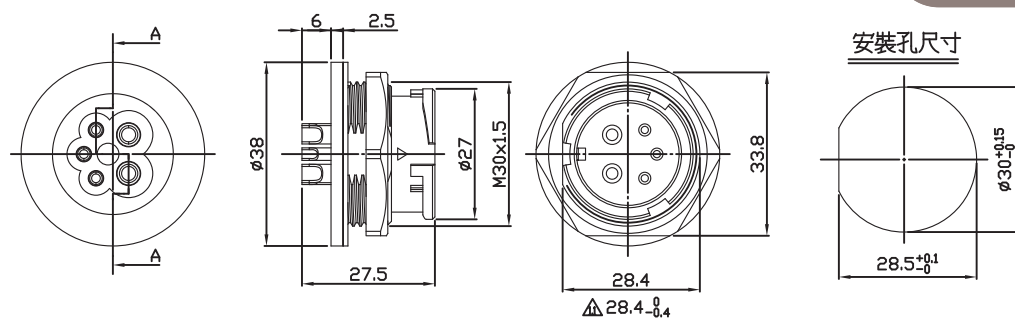
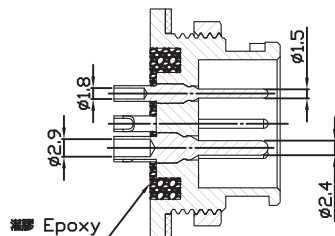
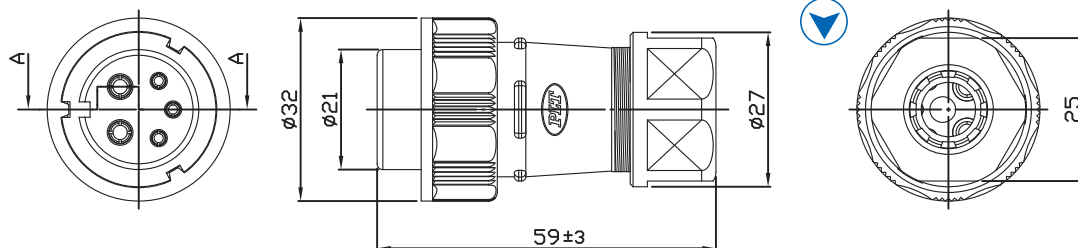
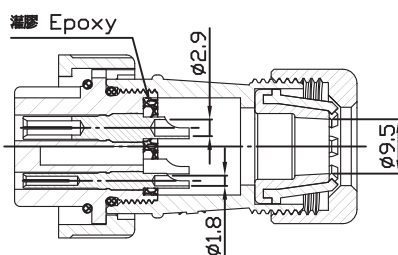
PAT WPM-21-RF-R



PAT WPM-21-PM-R

◆ No. of contacts	3					
Contacts Configuration						
Rated current / voltage	15A 250V					
Operation limit voltage (AC.V.rms)	250					
Withstanding voltage (AC.V.rms) 1 minute	1500					
Insulation resistance (MΩ MIN.) at DC 500V	2000					
Contact resistance (mΩ MAX.) at DC 1A	3					

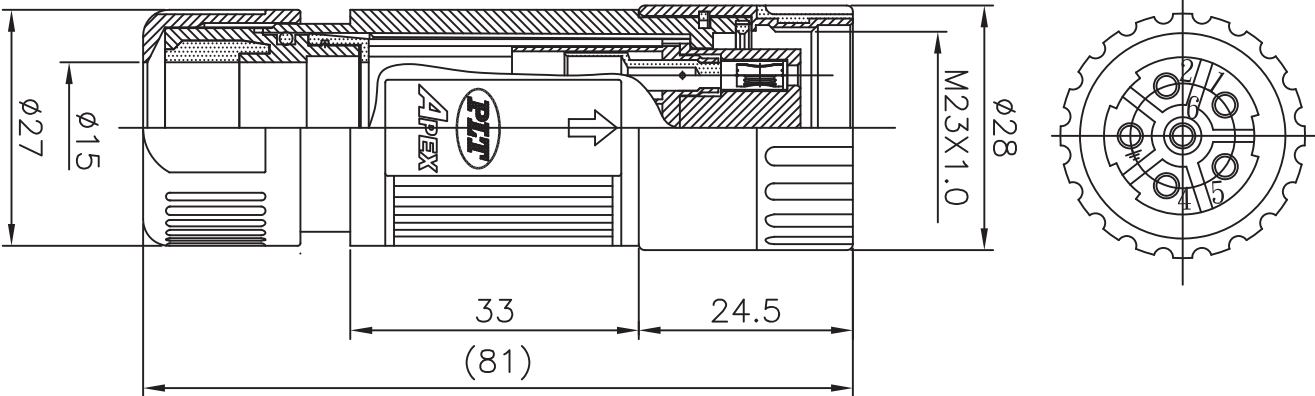


**WPM-305A -RM-R****PF****WPM-305A -PF-R**

◆ No. of contacts	5					
Contacts Configuration						
Rated current / voltage	5A/20A 250V					
Operation limit voltage (AC.V,rms)	200					
Withstanding voltage (AC.V,rms) 1 minute	1000					
Insulation resistance (MΩ MIN.) at DC 500V	1000					
Contact resistance (mΩ MAX.) at DC 1A	3					

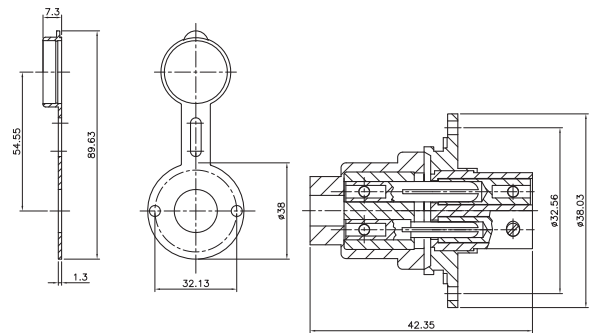


5  
WPS SERIES

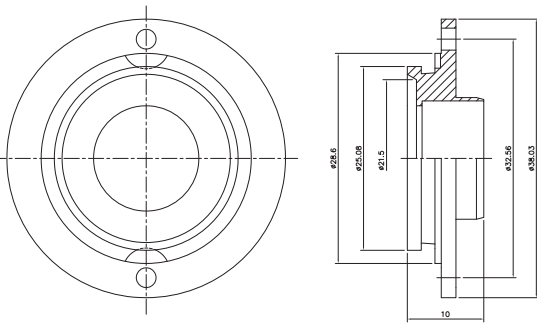


PAT WPS-236A-RF

◆ No. of contacts	6					
Contacts Configuration						
Rated Current / Voltage	30A 250V					
Operation Limit Voltage(AC. V. rms)	AC/DC 630V					
Withstanding Voltage(AC. V. rms) 1 minute	2000					
Insulation Resistance ( MΩ min.) at DC 1A	2000					
Contact Resistance ( mΩ MAX.) at DC 1A	3					



M-6029



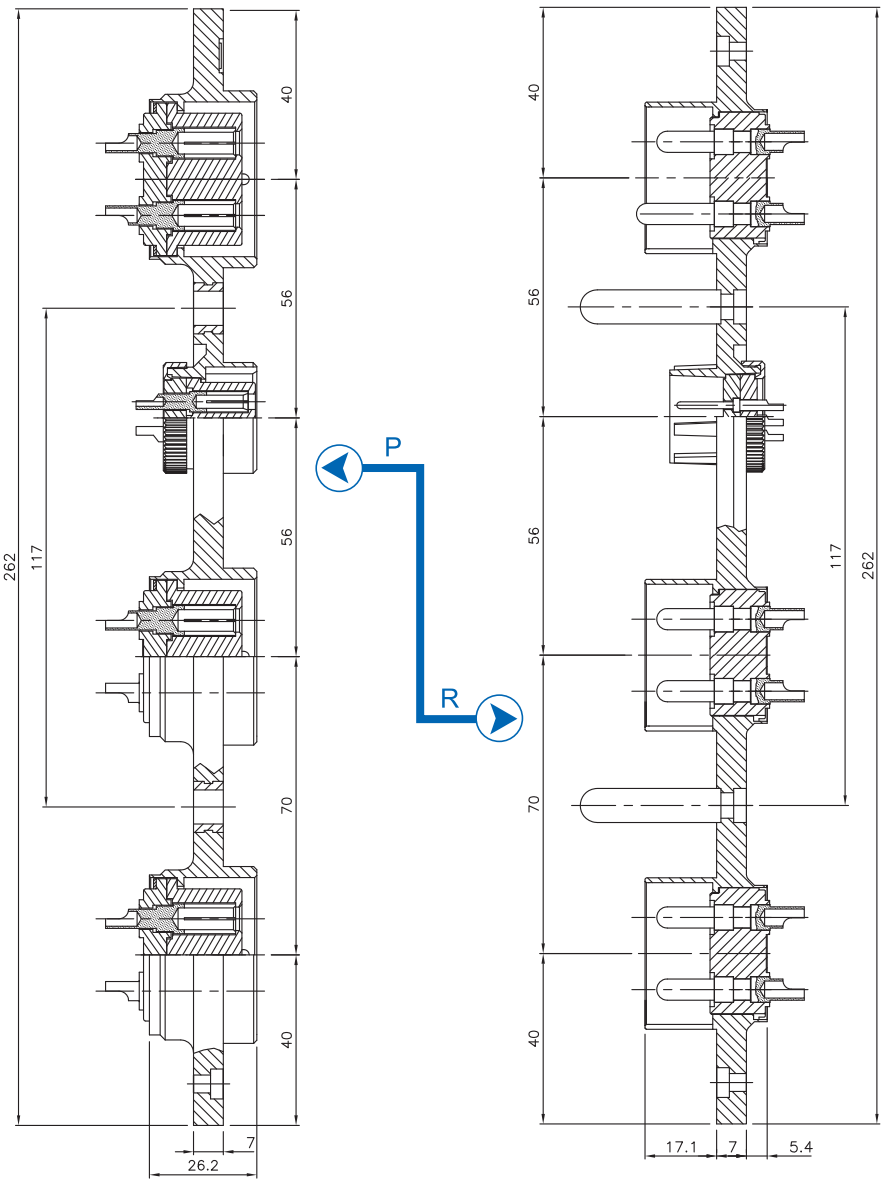
M-6029A



M-6029 Series



Multi-Jointed Connectors for Machine Plate



PLTS-40 Series

5  
COMPLEX SERIES - PLTS SERIES

PAT PLTS-40❖-P

PAT PLTS-40❖-R

(Patent of invention , all rights reserved 專利產品、仿冒必究)

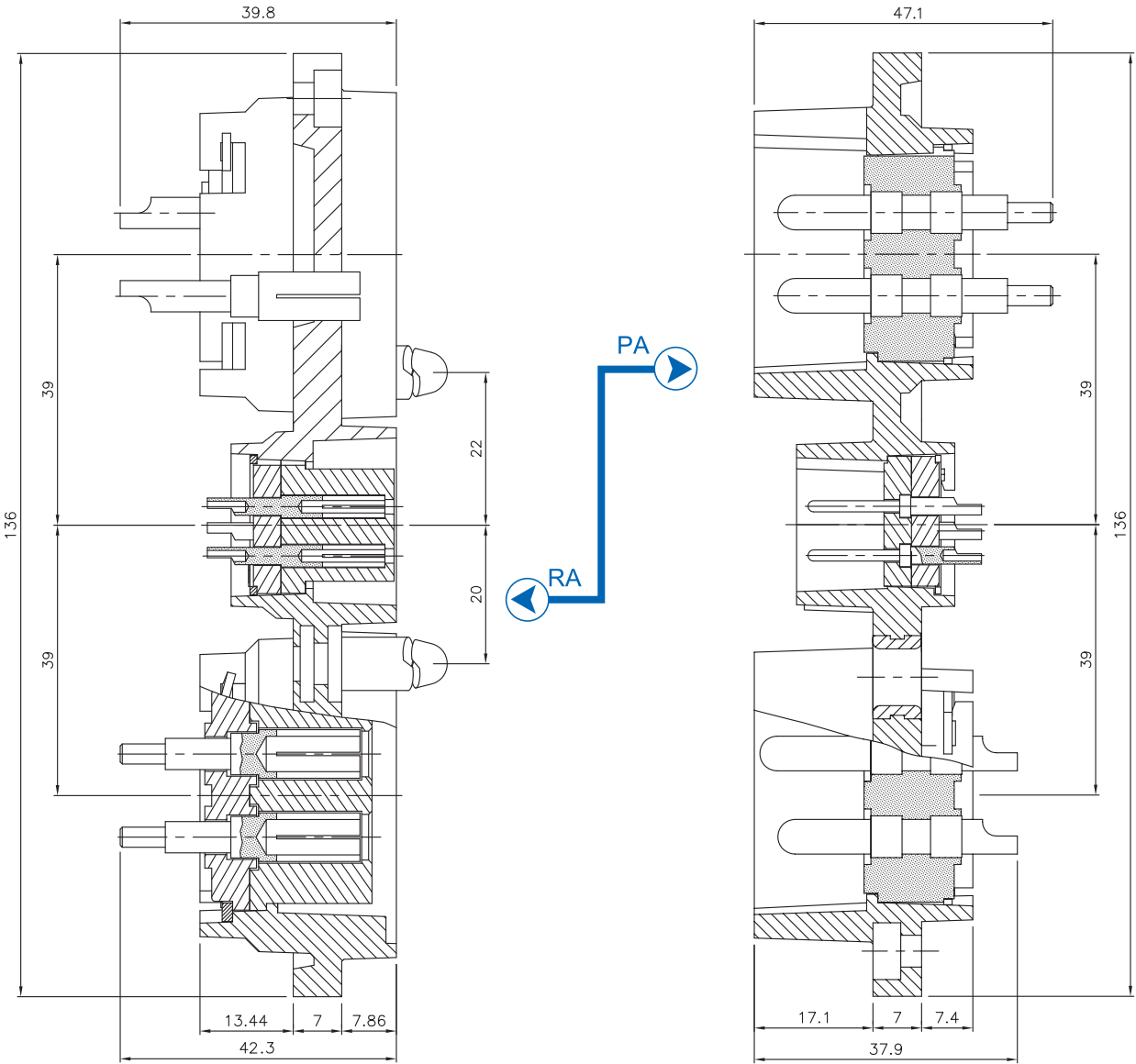
❖ No. of contacts	4					
Contacts Configuration						
Rated current / voltage	30A 250V					
Operation limit voltage (AC.V,rms)	500					
Withstanding voltage (AC.V,rms) 1 minute	2500					
Insulation resistance (MΩ MIN.) at DC 500V	2000					
Contact resistance (mΩ MAX.) at DC 1A	3					
Solder inter diameter	4					

Multi-Jointed Connectors for Machine Plate



COMPLEX SERIES - PLTS SERIES

5



PAT PLTS-40 S-RA

PAT PLTS-40 S-PA

(Patent of invention , all rights reserved 專利產品、仿冒必究)

◆ No. of contacts	4					
Contacts Configuration						
Rated current / voltage	30A 250V					
Operation limit voltage (AC.V.rms)	500					
Withstanding voltage (AC.V.rms) 1 minute	2500					
Insulation resistance (MΩ MIN.) at DC 500V	2000					
Contact resistance (mΩ MAX.) at DC 1A	3					
Solder inter diameter	4					

# BUSINESS SCOPE

- | **The 1st Production Dept.**  
**Connector**  
Military / Waterproof / RF Coaxial / Industrial Series
- | **The 2nd Production Dept.**  
**Various Types of Molds**  
Customized Mold and Machinery Components Design & Manufacturing
- | **The 3rd Production Dept.**  
**Wire Assembly**
- | **The 4th Production Dept.**  
**Wireless Communication**  
Antenna / Transceiver / Peripheral Earphone Mic
- | **The 5th Production Dept.**  
**Precision Machine Manufacturing**  
CNC Turning and Milling Compound Lathe / Precision Hand Arbor Press and Table Press Manufacturing
- | **The 6th Production Dept.**  
**Medical Facilities for Senior Health Care**  
Wireless Remote Control Patient Care System / Medical Care On-Call System
- | **The 7th Production Dept.**  
**Channels of Distribution for Products Solution**



ISO / TS 16949 CERTIFIED IN GLOBAL AUTOMOBILE INDUSTRY

ISO 14001 / 9001 INTERNATIONAL Q/C CERTIFIED, INDUSTRY CATEGORY SUPPLIER OF M.N.D.

ISO / TS 16949 全球汽車產業品質管理系統認證

ISO 14001 國際環境管理系統SGS認證專業製造廠 ISO 9001 國際品質管理系統認證



International Q/C Certification



RoHS Compliant



ISO9001



ISO14001



ISO/TS16949

Agent / 代理商



**錫鋼精密科技股份有限公司**  
**APEX PRECISION TECHNOLOGY CORP.**

地址 24264新北市新莊區民安西路405號

Add No. 405, Min-an W. Rd., Sinjhuang District, New Taipei City 24264, Taiwan. R.O.C

Tel +886-2-2206-8899 (代表號) Fax +886-2-2208-0559

apexmail@plt.com.tw

日本事務所 - 展示中心

日本東京都渋谷区代々木3丁目28番-1

(2015年6月落成予定)



[www.plt.com.tw](http://www.plt.com.tw)

